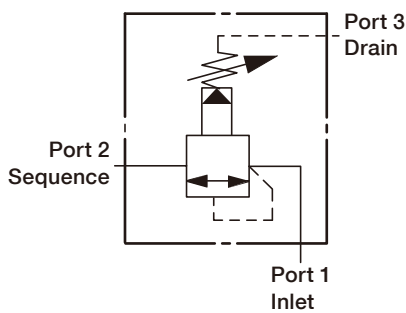


RS



SYMBOLS



ORDER CODES

RS **2C** - **T11A** - **L** **A** **N**

1 2 3 4 5 6

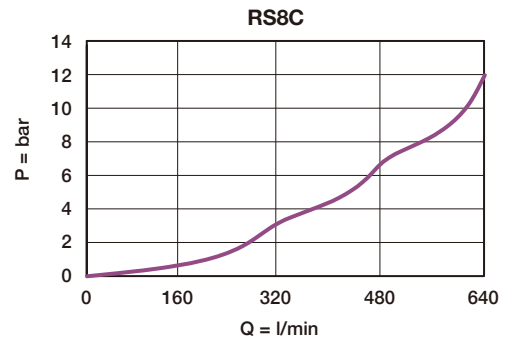
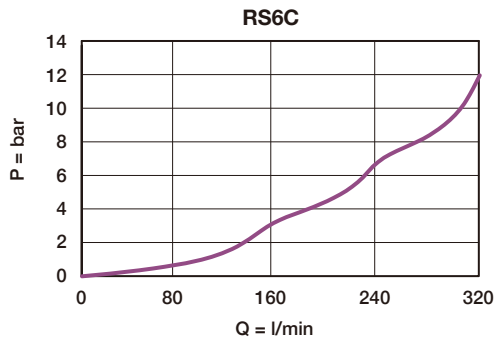
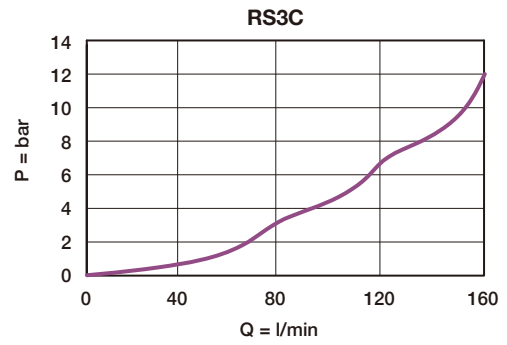
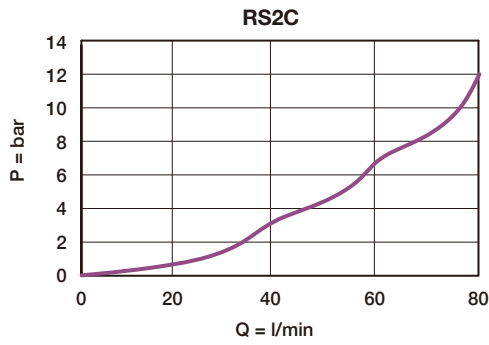
1	▶ Model Name	RS	
2	▶ Valve Size	2C, 3C, 6C, 8C	
3	▶ Cavity	T11A, T2A, T17A, T19A	
4	▶ Control Manner	L	standard screw adjustment
		K	hand knob with lock knob
5	▶ Adjustable Range	A	7 ~ 210 bar
		B	3.5 ~105 bar
		N	4 ~ 55 bar
		W	10 ~ 315 bar
6	▶ Material of Seal	N	buna-N
		V	viton

MODEL SPEC.

Model	Cavity	Capacity (l/min)	Max. Pressure (bar)	Installation Torque (Nm)	Operational Temperature	Weight (kg)
RS2C	T11A	60	350	40/50	-35 ~ 100°C (-31 ~ 212°F)	0.17
RS3C	T2A	120	350	60/70		0.30
RS6C	T17A	240	350	200/215		0.64
RS8C	T19A	480	350	465/500		1.43

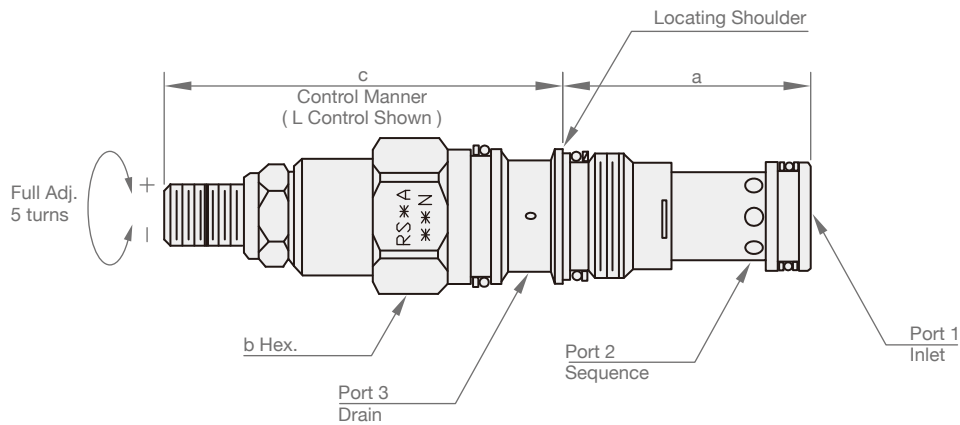
PERFORMANCE CURVES

► Pressure Drop Fully Sequence



DIMENSION

(UNIT : mm)



Model	a	b	c	
			L	K
RS2C	34.9	22.2	64	70
RS3C	34.9	28.6	72	78
RS6C	46.0	31.8	84	90
RS8C	63.5	41.3	100	107