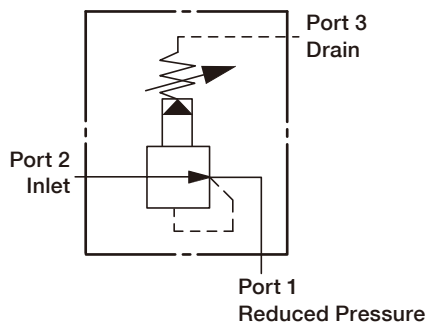


PB



SYMBOLS



ORDER CODES

PB **2B** - **T11A** - **L** **A** **N**

① ② ③ ④ ⑤ ⑥

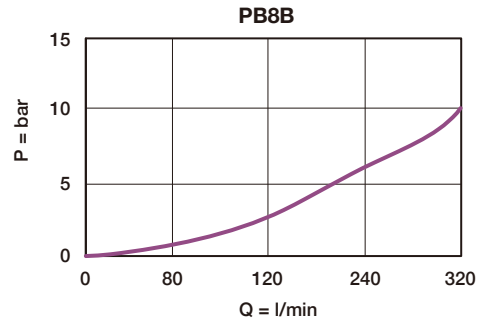
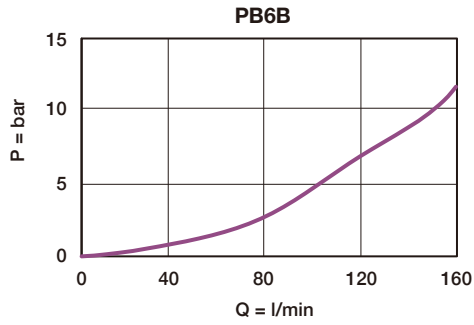
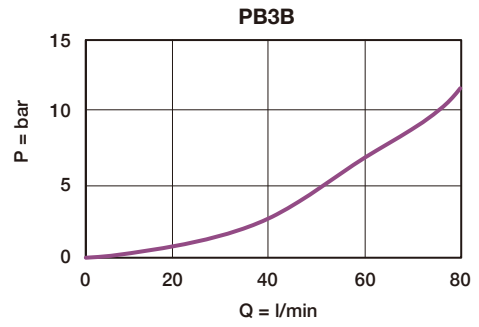
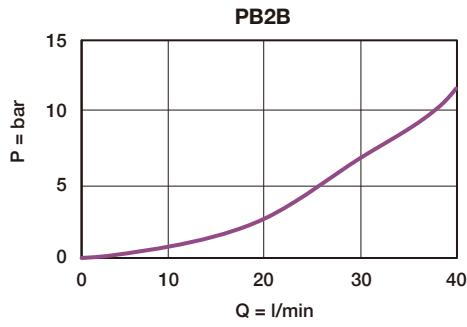
① ▶ Model Name	PB	
② ▶ Valve Size	2B, 3B, 6B, 8B	
③ ▶ Cavity	T11A, T2A, T17A, T19A	
④ ▶ Control Manner	L	standard screw adjustment
	K	hand knob with lock knob
⑤ ▶ Adjustable Range	A	7 ~ 210 bar
	B	3.5 ~105 bar
	N	4~55 bar
	W	10~315 bar
⑥ ▶ Material of Seal	N	buna-N
	V	viton

MODEL SPEC.

Model	Cavity	Capacity (l/min)	Max. Pressure (bar)	Installation Torque (Nm)	Operational Temperature	Weight (kg)
PB2B	T11A	40	350	40/50	-35 ~ 100°C (-31 ~ 212°F)	0.17
PB3B	T2A	80	350	60/70		0.30
PB6B	T17A	160	350	200/215		0.64
PB8B	T19A	320	350	465/500		1.43

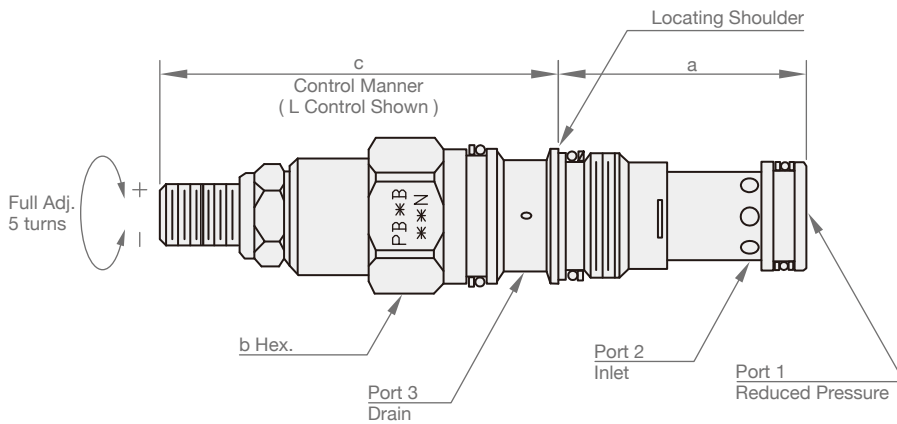
PERFORMANCE CURVES

► No Load Pressure Drop



DIMENSION

(UNIT : mm)



Model	a	b	c	
			L	K
PB2B	34.9	22.2	64	70
PB3B	34.9	28.6	72	78
PB6B	46.0	31.8	84	90
PB8B	63.5	41.3	100	107