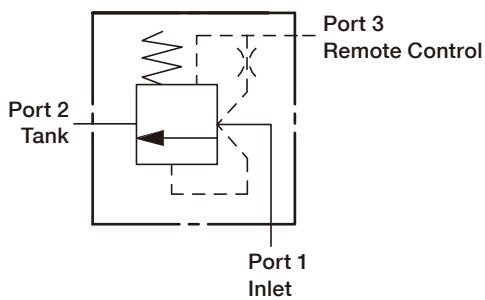


# LRA



## SYMBOLS



## ORDER CODES

**LR 2 A - T11A - X D N**

1 2 3 4 5 6 7

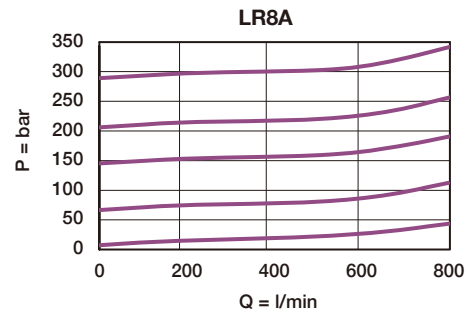
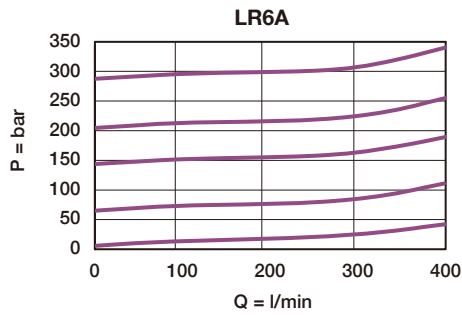
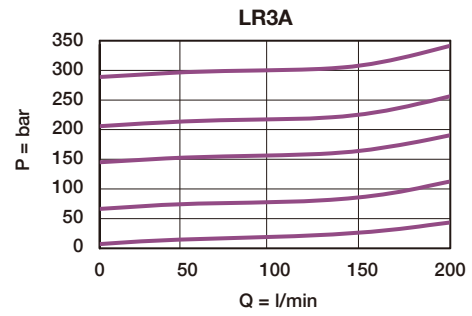
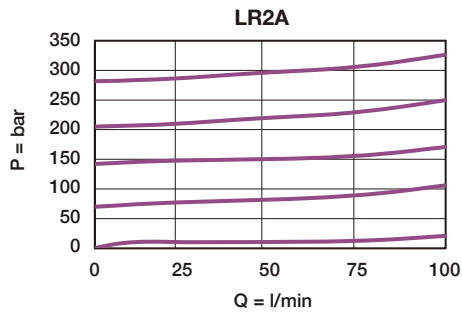
|   |                     |                             |
|---|---------------------|-----------------------------|
| 1 | ▶ Model Name        | LR                          |
| 2 | ▶ Valve Size        | 2, 3, 6, 8                  |
| 3 | ▶ Type              | A internal pilot            |
| 4 | ▶ Cavity            | T11A, T2A, T17A, T19A       |
| 5 | ▶ Control Manner    | X unadjustable              |
|   |                     | L standard screw adjustment |
| 6 | ▶ Cracking Pressure | D 3.5 bar                   |
|   |                     | F 7.0 bar                   |
|   |                     | G 10.0 bar                  |
| 7 | ▶ Material of Seal  | N buna-N                    |
|   |                     | V viton                     |

## MODEL SPEC.

| Model | Cavity | Capacity (l/min) | Max. Pressure (bar) | Installation Torque (Nm) | Operational Temperature      | Weight (kg) |
|-------|--------|------------------|---------------------|--------------------------|------------------------------|-------------|
| LR2A  | T11A   | 60               | 350                 | 40/50                    | -35 ~ 100°C<br>(-31 ~ 212°F) | 0.12        |
| LR3A  | T2A    | 120              | 350                 | 60/70                    |                              | 0.22        |
| LR6A  | T17A   | 240              | 350                 | 200/215                  |                              | 0.50        |
| LR8A  | T19A   | 480              | 350                 | 465/500                  |                              | 1.15        |

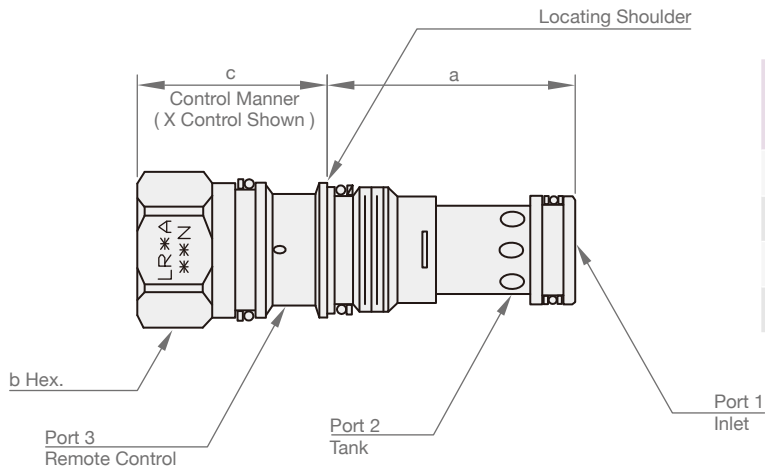
## PERFORMANCE CURVES

### ► Typical Pressure Drop



## DIMENSION

( UNIT : mm )



| Model | a    | b    | c  |     |
|-------|------|------|----|-----|
|       |      |      | X  | L   |
| LR2A  | 34.9 | 22.2 | 31 | 64  |
| LR3A  | 34.9 | 28.6 | 35 | 72  |
| LR6A  | 46.0 | 31.8 | 46 | 84  |
| LR8A  | 63.5 | 41.3 | 59 | 100 |