

Filter

- Return Line Filter
- Mega Flow Rate Filter
- Alumium Filter
- Super High Pressure Filter
- High Pressure Filter
- Medium Pressure Filter
- FSS Suction and Return Line Filter
- Elements of Filter
- Strainer
- Pressure Indicator



Contents

Filter

Return Line Filter

| | |
|-----------------------------|----|
| RFTD | 08 |
| RFT, RF | 10 |
| FPA, FPF | 12 |
| SPR-06, PR-06, BPR-08 | 14 |

Mega Flow Rate Filter

| | |
|------------|----|
| DMPH | 16 |
| SMPH | 18 |

Alumium Filter

| | |
|---------------|----|
| DHP-04 | 20 |
| DHP-06 | 22 |
| DHHP-08 | 24 |
| DHHP-10 | 26 |

Super High Pressure Filter

| | |
|---------------|----|
| HHP-03 | 28 |
| HHPG-03 | 30 |

High Pressure Filter

| | |
|-----------------|----|
| HP-06 | 32 |
| HP-08 | 34 |
| HP-10 | 36 |
| HPH-06 | 38 |
| HPH-08 | 40 |
| HPH-10/12 | 42 |
| ILF | 44 |
| MFP-02 | 46 |
| MHF-02 | 48 |
| HPM-03 | 50 |

Medium Pressure Filter

| | |
|-----------------|----|
| MPH-04 | 52 |
| MPH-08 | 54 |
| MPH-10/12 | 56 |

(continue)

FSS Suction and Return Line Filter

| | |
|-----------|----|
| FSS | 58 |
|-----------|----|

Elements of Filter

| | |
|-------|----|
| | 60 |
|-------|----|

Strainer

| | |
|------------------------------|----|
| SFN type | 61 |
| SFW type | 62 |
| SFF type | 63 |
| SFC type | 64 |
| SFWS type | 65 |
| SFFS type | 66 |
| M-43 | 67 |
| N type | 68 |
| W type | 69 |
| MF type | 70 |
| Special Suction Filter | 71 |

Pressure Indicator

| | |
|------------------------------|----|
| S1 (Visual) | 72 |
| S2 (Visual-Electrical) | 73 |

Index

Return Line Filter

| Page No. | Model | Thread Connection | Flow (l/min) | Operational Pressure (bar) | House Material |
|----------|---------|-------------------|--------------|----------------------------|----------------|
| 08 | RFTD-06 | BSP 3/4" | 145 ~ 175 | 8 | Plastic |
| 08 | RFTD-08 | BSP 1" | 196 ~ 300 | 8 | Plastic |
| 08 | RFTD-10 | BSP 1 1/4" | 145 ~ 175 | 8 | Plastic |
| 08 | RFTD-12 | BSP 1 1/2" | 196 ~ 300 | 8 | Plastic |
| 10 | RFT-06 | PT 3/4" | 75 | 13.7 | Iron |
| 10 | RF-06 | PT 3/4" | 75 | 13.7 | Iron |
| 10 | RF-08 | PT 1" | 75 | 13.7 | Iron |
| 10 | RF-10 | PT 1 1/4" | 75 | 6.8 | Iron |
| 12 | FPA-06 | PT 3/4" | 70 | 25 | Iron |
| 12 | FPA-08 | PT 1" | 90 | 25 | Iron |
| 12 | FPF-06 | PT 3/4" | 70 | 10 | Plastic |
| 12 | FPF-08 | PT 1" | 90 | 10 | Plastic |
| 14 | SPR-06 | NPT 3/4" | 30 | 8 | Plastic |
| 14 | PR-06 | NPT 3/4" | 90 | 8 | Plastic |
| 14 | BPR-06 | NPT 1" | 280 | 8 | Plastic |

Mega Flow Rate Filter

| Page No. | Model | Thread Connection | Flow (l/min) | Operational Pressure (bar) | House Material |
|----------|---------|-------------------|--------------|----------------------------|----------------|
| 16 | DMPH-12 | BSP 1 1/2" | 350 | 70 | Iron |
| 18 | SMPH-10 | PT 1 1/4" | 350 | 70 | Iron |
| 18 | SMPH-12 | PT 1 1/2" | 350 | 70 | Iron |

Alumium Filter

| Page No. | Model | Thread Connection | Flow (l/min) | Operational Pressure (bar) | House Material |
|----------|-----------|--------------------------|--------------|----------------------------|----------------|
| 20 | DHP-04-1 | BSP, NPT, SAE 1/2", 3/8" | 15 ~ 75 | 105 | Alumium |
| 20 | DHP-04-2 | BSP, NPT, SAE 1/2" | 20 ~ 90 | 105 | Alumium |
| 20 | DHP-04-3 | BSP, NPT, SAE 1/2" | 30 ~ 100 | 105 | Alumium |
| 22 | DHP-06-1 | BSP, NPT, SAE 3/4" | 15 ~ 75 | 210 | Alumium |
| 22 | DHP-06-2 | BSP, NPT, SAE 3/4" | 35 ~ 120 | 210 | Alumium |
| 24 | DHHP-08-1 | BSP, NPT, SAE 1" | 70 ~ 120 | 210 | Alumium |
| 24 | DHHP-08-2 | BSP, NPT, SAE 1" | 90 ~ 140 | 210 | Alumium |
| 24 | DHHP-08-3 | BSP, NPT, SAE 1" | 110 ~ 170 | 210 | Alumium |
| 26 | DHHP-10-1 | BSP, NPT, SAE 1 1/4" | 140 ~ 400 | 210 | Alumium |
| 26 | DHHP-10-2 | BSP, NPT, SAE 1 1/2" | 180 ~ 500 | 210 | Alumium |
| 26 | DHHP-10-3 | BSP, NPT, SAE 2" | 250 ~ 600 | 210 | Alumium |

Super High Pressure Filter

| Page No. | Model | Thread Connection | Flow (l/min) | Operational Pressure (bar) | House Material |
|----------|---------|--------------------|--------------|----------------------------|----------------|
| 28 | HHP-03 | BSP, NPT, SAE 3/8" | 3.5 ~ 15 | 630 | Steel |
| 30 | HHPG-03 | BSP, NPT, SAE 3/8" | 3.5 ~ 15 | 630 | Steel |

High Pressure Filter

| Page No. | Model | Thread Connection | Flow (l/min) | Operational Pressure (bar) | House Material |
|----------|---------|----------------------|--------------|----------------------------|----------------|
| 32 | HP-06-1 | BSP, NPT, SAE 3/4" | 15 ~ 75 | 280 | Steel |
| 32 | HP-06-2 | BSP, NPT, SAE 3/4" | 20 ~ 90 | 280 | Steel |
| 32 | HP-06-3 | BSP, NPT, SAE 3/4" | 35 ~ 120 | 280 | Steel |
| 34 | HP-08-1 | BSP, NPT, SAE 1" | 35 ~ 120 | 280 | Steel |
| 34 | HP-08-2 | BSP, NPT, SAE 1" | 70 ~ 200 | 280 | Steel |
| 36 | HP-10-1 | BSP, NPT, SAE 1" | 70 ~ 200 | 280 | Steel |
| 36 | HP-10-2 | BSP, NPT, SAE 1 1/4" | 140 ~ 400 | 280 | Steel |
| 36 | HP-10-3 | BSP, NPT, SAE 1 1/2" | 200 ~ 500 | 280 | Steel |
| 36 | HP-10-4 | BSP, NPT, SAE 2" | 250 ~ 600 | 280 | Steel |

High Pressure Filter

| Page No. | Model | Thread Connection | Flow (l/min) | Operational Pressure (bar) | House Material |
|----------|----------|--|--------------|----------------------------|----------------|
| 38 | HPH-06-2 | PT 3/4" | 28 ~ 100 | 250 | Forged Iron |
| 38 | HPH-06-3 | PT 3/4" | 49 ~ 105 | 250 | Forged Iron |
| 40 | HPH-08-2 | PT 1" | 110 ~ 225 | 250 | Forged Iron |
| 42 | HPH-10-2 | PT 1 1/4" | 192 ~ 378 | 250 | Forged Iron |
| 42 | HPH-12-2 | PT 1 1/2" | 192 ~ 378 | 250 | Forged Iron |
| 44 | ILF | PT, BSPP, NPT, SAE 1/4", 3/8", 1/2" | 35 | 350 | Forged Iron |
| 46 | MFP-02 | PT 1/4" | 28 ~ 50 | 320 | Forged Iron |
| 48 | MHF-02 | PT 1/4" | 28 ~ 50 | 350 | Forged Iron |
| 50 | HPM-03 | BSP, NPT, SAE 3/8" | 20 ~ 90 | 280 | Forged Iron |

Medium Pressure Filter

| Page No. | Model | Thread Connection | Flow (l/min) | Operational Pressure (bar) | House Material |
|----------|--------|-------------------|--------------|----------------------------|----------------|
| 52 | MPH-04 | BSP 1/2" | 35 | 70 | Casting Iron |
| 54 | MPH-08 | PT 1" | 85 | 105 | Casting Iron |
| 56 | MPH-10 | PT 1 1/4" | 250 | 105 | Casting Iron |
| 56 | MPH-12 | PT 1 1/2" | 250 | 105 | Casting Iron |

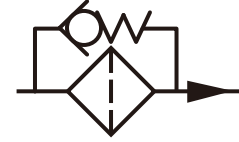
FSS Suction and Return Line Filter

| Page No. | Model | Flange | Flow (l/min) | Operational Pressure (bar) | House Material |
|----------|-----------|--------|--------------|----------------------------|----------------|
| 58 | FSS-16-10 | 1 1/4" | 250 | 10 | Iron |
| 58 | FSS-16-12 | 1 1/2" | 300 | 10 | Iron |
| 58 | FSS-16-16 | 2" | 320 | 10 | Iron |
| 58 | FSS-24-16 | 2" | 400 | 10 | Iron |
| 58 | FSS-24-20 | 2 1/2" | 550 | 10 | Iron |
| 58 | FSS-24-24 | 3" | 700 | 10 | Iron |
| 58 | FSS-32-24 | 3" | 750 | 10 | Iron |
| 58 | FSS-32-28 | 3 1/2" | 760 | 10 | Iron |
| 58 | FSS-32-32 | 4" | 820 | 10 | Iron |

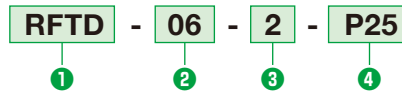
RFTD



SYMBOLS



ORDER CODES



| | | | |
|---|------------------------|------------|------------|
| 1 | Model Name | RFTD | |
| 2 | Thread Connection | 06 | BSP 3/4" |
| | | 08 | BSP 1" |
| | | 10 | BSP 1 1/4" |
| | | 12 | BSP 1 1/2" |
| 3 | The Filter Length | 2, 3 | |
| 4 | Type of Filter Element | P10, P25 * | |

* P10:paper 10μ, P25:paper 25μ

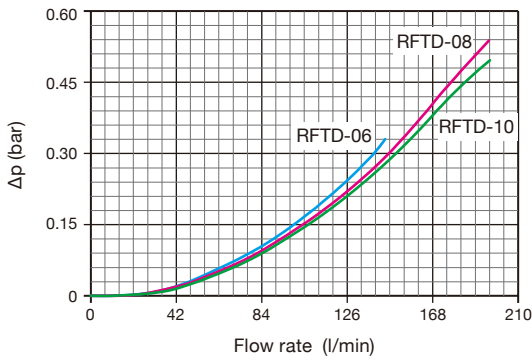


MODEL SPEC.

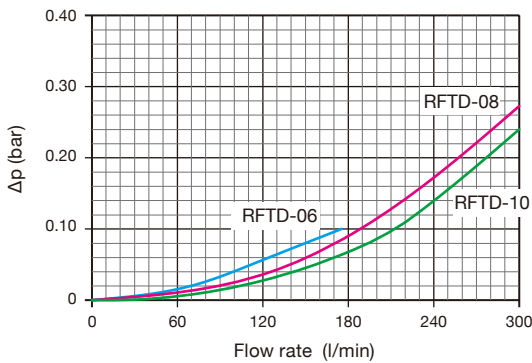
| Model | Thread Connection (BSP) | Flow (l/min) | Operational Pressure (bar) | Max. Operational Temperature | Weight (kg) |
|-----------|-------------------------|--------------|----------------------------|------------------------------|-------------|
| RFTD-06-2 | 3/4" | 145 | 8 | 110°C (230°F) | 0.85 |
| RFTD-06-3 | 3/4" | 175 | | | 1.20 |
| RFTD-08-2 | 1" | 196 | | | 0.85 |
| RFTD-08-3 | 1" | 300 | | | 1.20 |
| RFTD-10-2 | 1 1/4" | 145 | | | 3.65 |
| RFTD-10-3 | 1 1/4" | 175 | | | 3.9 |
| RFTD-12-2 | 1 1/2" | 196 | | | 3.65 |
| RFTD-12-3 | 1 1/2" | 300 | | | 3.9 |

Filter housing (Materials)
 • Head: Aluminium
 • Cover and house: Nylon

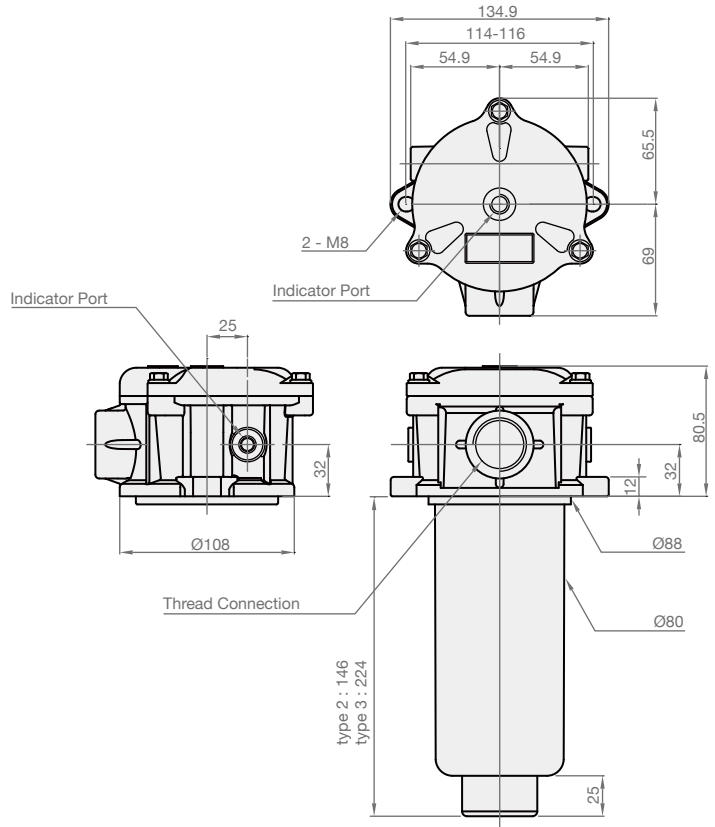
► Length 2



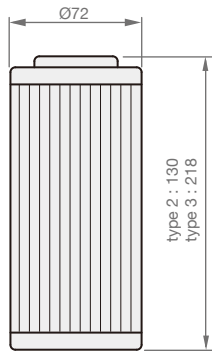
► Length 3



On the condition of oil viscosity at 32 mm²/s
 Δp varies proportional with density.



ELEMENTS



► Order Codes

SE - **RFTD-08-3** - **P25**

1

2

3

| | | |
|---|------------------------|------------------------------|
| 1 | Elements Model Name | SE |
| 2 | Filter Model Name | RFTD - 06, 08, 10, 12 - 2, 3 |
| 3 | Type of Filter Element | P10, P25, etc. |

► Material of Filtering Element

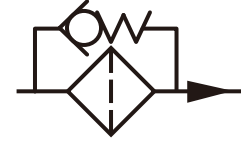
1. M represents metal material, a indicates glass fiber.
2. Regular order of metal element : 100M, 200M, 300M, 400M, 700M, etc.
3. Regular order of glass fiber element : A3, A5, A10, A25, A40, etc.

► Mesh to Micron Conversion Chart

| Mesh | μm | Mesh | μm |
|------|-----|------|----|
| 20 | 850 | 200 | 75 |
| 40 | 425 | 250 | 63 |
| 60 | 250 | 300 | 50 |
| 100 | 150 | 400 | 40 |
| 120 | 125 | 700 | 25 |
| 150 | 106 | 1450 | 10 |

RFT, RF

SYMBOLS



ORDER CODES

RFT - **06** - **25N**

① ② ③

| | | |
|-----------------------------------|-------------------------|------------|
| ① ▶ Model Name | RFT | tank type |
| | RF | pipng type |
| ② ▶ Thread Connection | 06 | PT 3/4" |
| | 08 | PT 1" |
| | 10 | PT 1 1/4" |
| ③ ▶ Type of Filter Element | 10N, 25N, 100M * | |

* N:Paper ; 10:10μ, 25:25μ ; M:metal ; 100:100Mesh



RFT

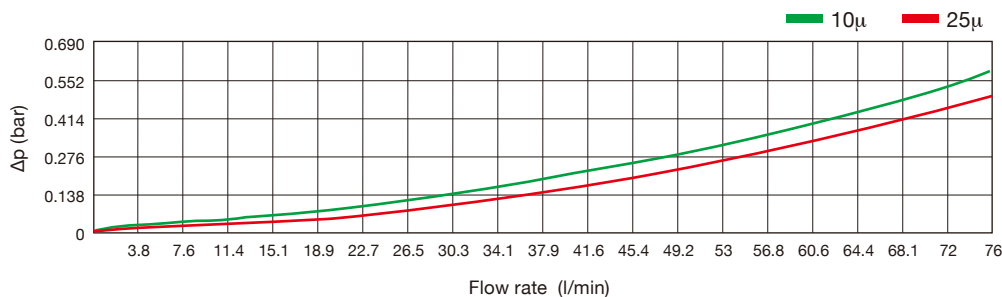


RF

MODEL SPEC.

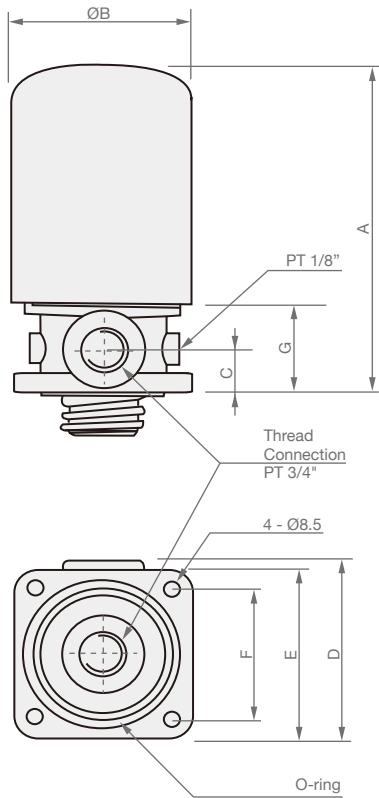
| Model | Mounted | Thread Connection (PT) | Max. Operational Pressure (bar) | Max. Operational Temperature | Weight (kg) |
|--------|---------|------------------------|---------------------------------|------------------------------|-------------|
| RFT-06 | Tank | 3/4" | 13.7 | 107°C (225°F) | 0.98 |
| RF-06 | Piping | 3/4" | 13.7 | | 0.8 |
| RF-08 | Piping | 1" | 13.7 | | 0.8 |
| RF-10 | Piping | 1 1/4" | 6.8 | | 1.84 |

HOUSING PRESSURE DROP CURVE

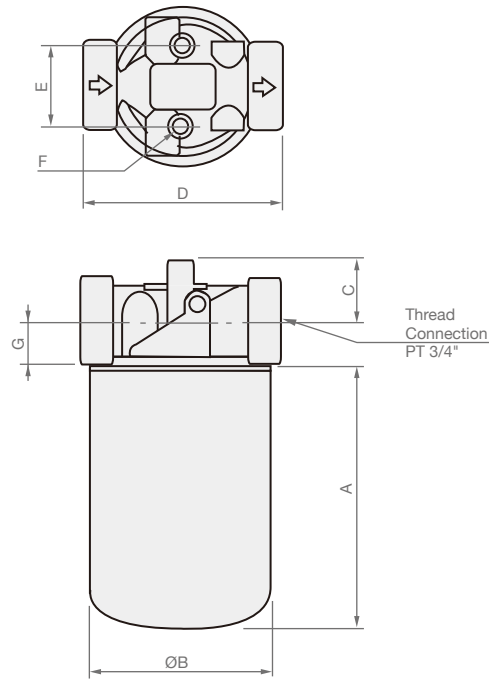


On the condition of oil viscosity at 32 mm²/s
Δp varies proportional with density.

► RFT

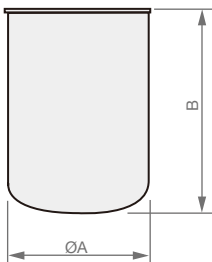


► RF



| Model | A | B | C | D | E | F | G |
|--------|-----|-----|----|-----|------|----------|----|
| RFT-06 | 184 | 94 | 25 | 95 | 90 | 70 | 50 |
| RF-06 | 133 | 94 | 25 | 94 | 38 | M6 P1 | 24 |
| RF-08 | 133 | 94 | 25 | 94 | 38 | M6 P1 | 24 |
| RF-10 | 174 | 127 | 30 | 135 | 47.6 | M8 P1.25 | 37 |

ELEMENTS

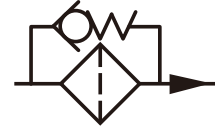


| Model | A | B | Nominal Filtration Retention | Flow (l/min) | Apply to |
|-------------|-----|-----|------------------------------|--------------|----------------------|
| SE-50-10N | 95 | 133 | 10 μ Cellulose | 60 | RFT-06, RF-06, RF-08 |
| SE-50-25N | 95 | 133 | 25 μ Cellulose | 70 | RFT-06, RF-06, RF-08 |
| SE-50-100M | 95 | 133 | 149 μ Wire mesh | 150 | RFT-06, RF-06, RF-08 |
| SE-70-10N | 95 | 219 | 10 μ Cellulose | 70 | RFT-06, RF-06, RF-08 |
| SE-70-25N | 95 | 219 | 25 μ Cellulose | 80 | RFT-06, RF-06, RF-08 |
| SE-100-10N | 129 | 174 | 10 μ Cellulose | 150 | RF-10 |
| SE-100-25N | 129 | 174 | 25 μ Cellulose | 160 | RF-10 |
| SE-100-100M | 129 | 174 | 149 μ Wire mesh | 250 | RF-10 |
| SE-150-10N | 129 | 279 | 10 μ Cellulose | 170 | RF-10 |
| SE-150-25N | 129 | 279 | 25 μ Cellulose | 180 | RF-10 |

FPA, FPF



SYMBOLS



ORDER CODES

FPF - **06** - **100M**

① ② ③

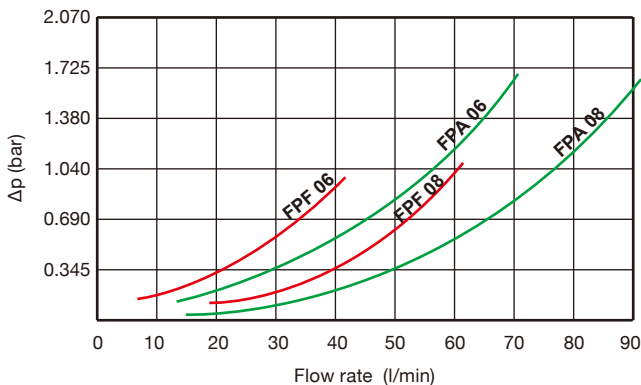
| | | | |
|-----|-------------------------------|-------------------------|--|
| ① ▶ | Model Name | FPA | |
| | | FPAL | stretchy type |
| | | FPF | semi-transparent out casing |
| | | FPFL | semi-transparent out casing, stretchy type |
| ② ▶ | Thread Connection | 06 | PT 3/4" |
| | | 08 | PT 1" |
| ③ ▶ | Type of Filter Element | 100M, 150M, etc. | |

MODEL SPEC.

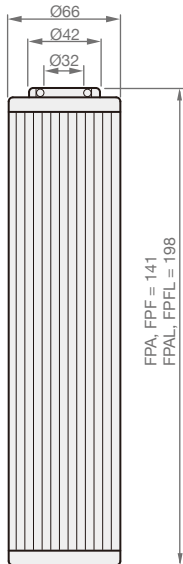
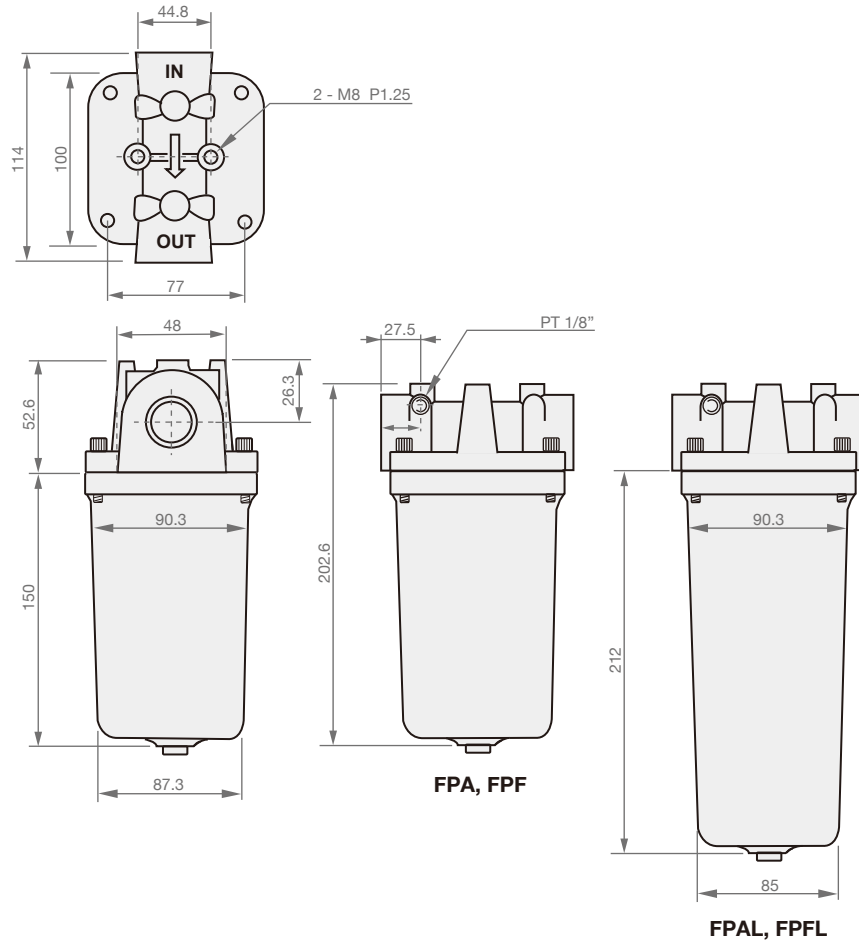
| Model | Thread Connection (PT) | Flow (l/min) | Operational Pressure (bar) | Weight (kg) |
|--------|------------------------|--------------|----------------------------|-------------|
| FPA-06 | 3/4" | 70 | 25 | 1.68 |
| FPA-08 | 1" | 90 | 25 | 1.68 |
| FPF-06 | 3/4" | 70 | 10 | 1.14 |
| FPF-08 | 1" | 90 | 10 | 1.14 |

FPF, FPFL - Max. operational temperature : 70°C

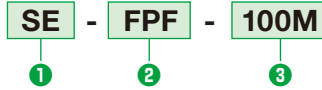
HOUSING PRESSURE DROP CURVE



On the condition of oil viscosity at 32 mm²/s
 Δp varies proportional with density.



► Order Codes



| | | |
|---|--------------------------|----------------------|
| 1 | ► Elements Model Name | SE |
| 2 | ► Filter Model Name | FPA, FPAL, FPF, FPFL |
| 3 | ► Type of Filter Element | 100M, 150M, etc. |

► Material of Filtering Element

1. M represents metal material, a indicates glass fiber.
2. Regular order of metal element : 100M, 200M, 300M, 400M, 700M, etc.
3. Regular order of glass fiber element : A3, A5, A10, A25, A40, etc.

► Mesh to Micron Conversion Chart

| Mesh | μm | Mesh | μm |
|------|---------------|------|---------------|
| 20 | 850 | 200 | 75 |
| 40 | 425 | 250 | 63 |
| 60 | 250 | 300 | 50 |
| 100 | 150 | 400 | 40 |
| 120 | 125 | 700 | 25 |
| 150 | 106 | 1450 | 10 |

SPR-06, PR-06, BPR-08



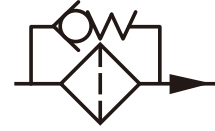
SPR-06

PR-06

BPR-08



SYMBOLS



ORDER CODES

SPR-06 - T150

1

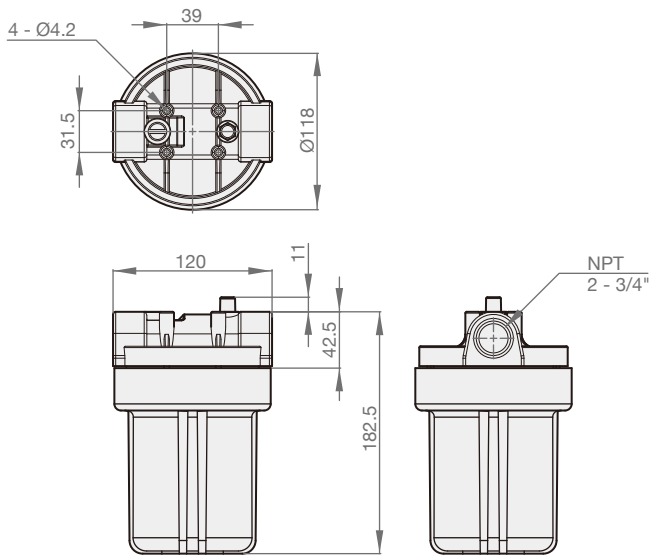
2

| | | | |
|---|----------------------------------|--------|----------|
| 1 | ▶ Model Name & Thread Connection | SPR-06 | NPT 3/4" |
| | | PR-06 | NPT 3/4" |
| | | BPR-08 | NPT 1" |
| 2 | ▶ Type of Filter Element | T150 | |

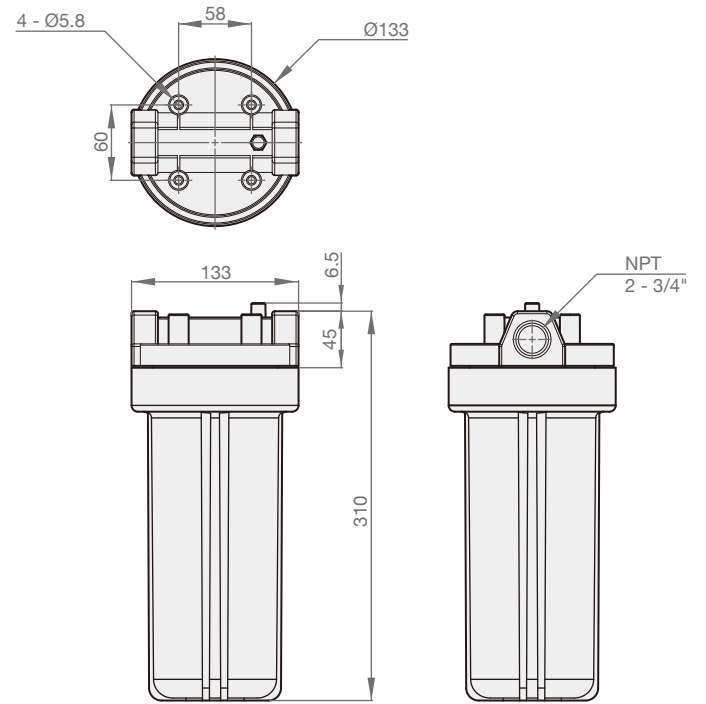
MODEL SPEC.

| Model | Thread Connection (NPT) | Type of Filter Element | Flow (l/min) | Max. Pressure (bar) | Weight (kg) |
|--------|-------------------------|------------------------|--------------|---------------------|-------------|
| SPR-06 | 3/4" | T150 | 30 | 8 | 0.6 |
| PR-06 | 3/4" | T150 | 90 | 8 | 1.2 |
| BPR-08 | 1" | T150 | 280 | 8 | 3.3 |

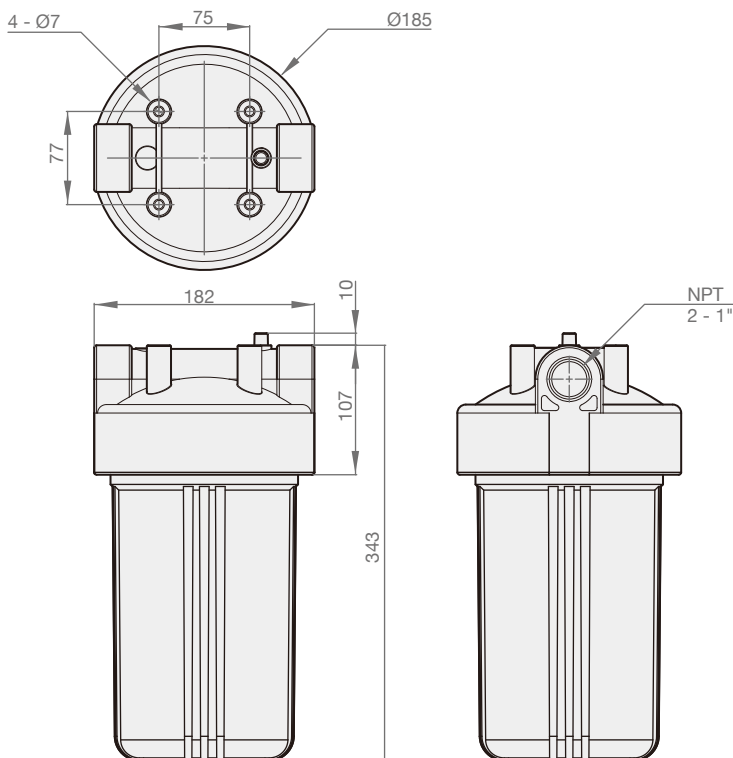
► SPR-06



► PR-06



► BPR-06



DMPH



SYMBOLS



ORDER CODES

DMPH - **12** - **1** - **400M** - **S2**

①
②
③
④
⑤

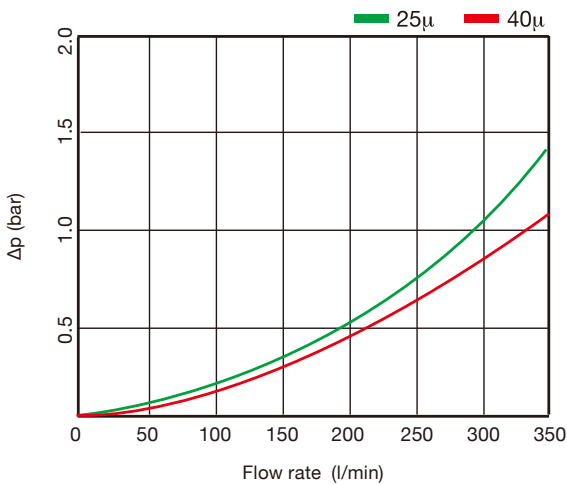
| | | | |
|---|----------------------------|----------------------------|-------------------|
| ① | Model Name | DMPH | |
| ② | Thread Connection | 12 | BSP 1 1/2" |
| ③ | Housing Length | 1, 2, 3 | |
| ④ | Type of Filter Element | 400M, 700M, A10, A25, etc. | |
| ⑤ | Type of Pressure Indicator | S1 | visual |
| | | S2 | visual-electrical |

MODEL SPEC.

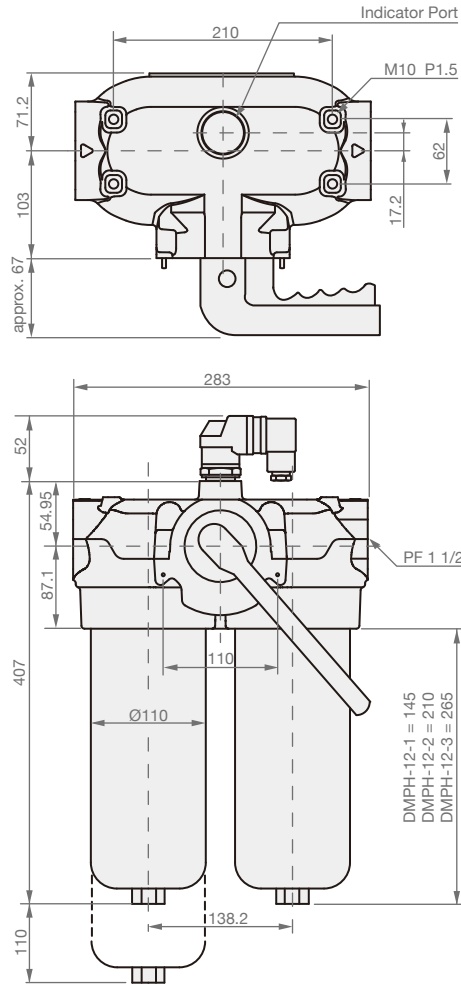
| Model | Thread Connection (BSP) | Max. Flow Rate (l/min) | Operational Pressure (bar) | Weight (kg) |
|---------|-------------------------|------------------------|----------------------------|-------------|
| DMPH-12 | 1 1/2" | 350 | 70 | 11.2 |

* Pressure indicator is an optional accessory.

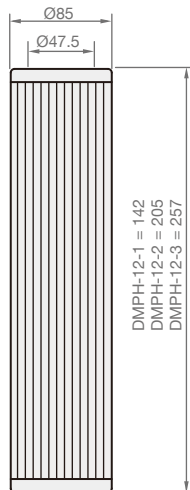
HOUSING PRESSURE DROP CURVE



Density: 32 mm²/s
 Δp varies proportional with density.



* Please spare the distance in order to renew the internal elements.



► Order Codes

SE - DMPH-12-1 - 400M

①

②

③

| | | |
|---|--------------------------|----------------------------|
| ① | ► Elements Model Name | SE |
| ② | ► Filter Model Name | DMPH-12-1, 2, 3 |
| ③ | ► Type of Filter Element | 400M, 700M, A10, A25, etc. |

► Material of Filtering Element

1. M represents metal material, a indicates glass fiber.
2. Regular order of metal element : 100M, 200M, 300M, 400M, 700M, etc.
3. Regular order of glass fiber element : A3, A5, A10, A25, A40, etc.

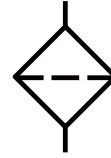
► Mesh to Micron Conversion Chart

| Mesh | µm | Mesh | µm |
|------|-----|------|----|
| 20 | 850 | 200 | 75 |
| 40 | 425 | 250 | 63 |
| 60 | 250 | 300 | 50 |
| 100 | 150 | 400 | 40 |
| 120 | 125 | 700 | 25 |
| 150 | 106 | 1450 | 10 |

SMPH



SYMBOLS



ORDER CODES

SMPH - **12** - **1** - **400M** - **S2**

①
②
③
④
⑤

| | | | |
|-----|-----------------------------------|----------------------------|-------------------|
| ① ▶ | Model Name | SMPH | |
| ② ▶ | Thread Connection | 10 | PT 1 1/4" |
| | | 12 | PT 1 1/2" |
| ③ ▶ | Housing Length | 1, 2, 3 | |
| ④ ▶ | Type of Filter Element | 400M, 700M, A10, A25, etc. | |
| ⑤ ▶ | Type of Pressure Indicator | S1 | visual |
| | | S2 | visual-electrical |

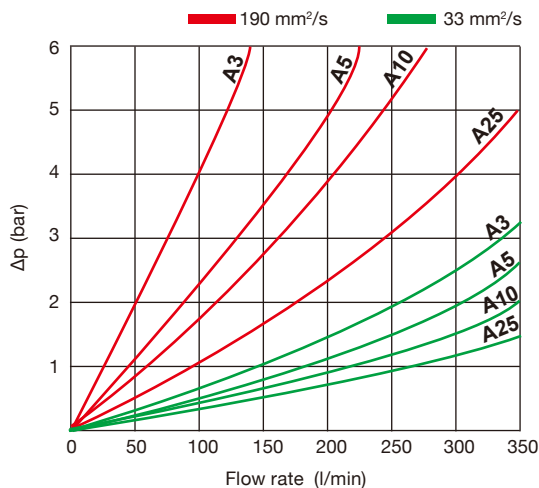
MODEL SPEC.

| Model | Thread Connection (PT) | Max. Flow Rate (l/min) | Operational Pressure (bar) | Weight (kg) |
|---------|------------------------|------------------------|----------------------------|-------------|
| SMPH-10 | 1 1/4" | 350 | 70 | 3.2 |
| SMPH-12 | 1 1/2" | 350 | 70 | 3.2 |

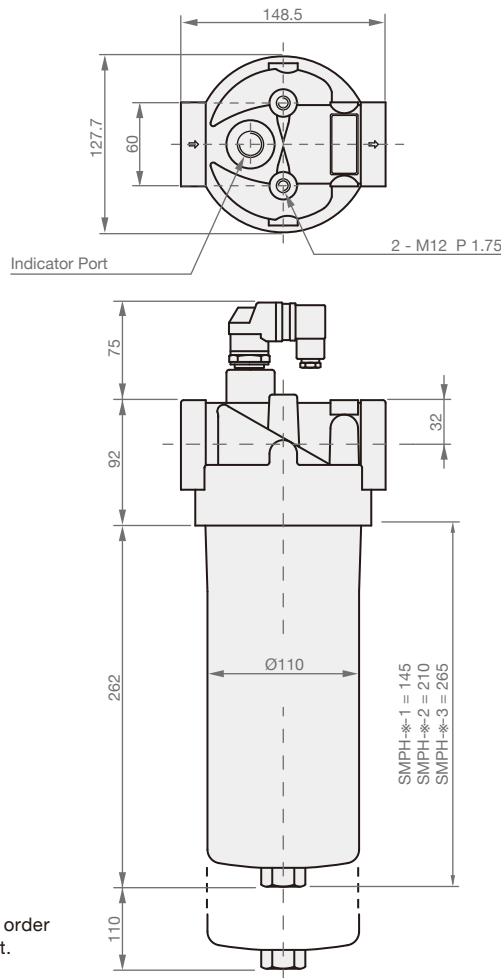
* Pressure indicator is an optional accessory.

* The pressure indicator and the element are not included in weight.

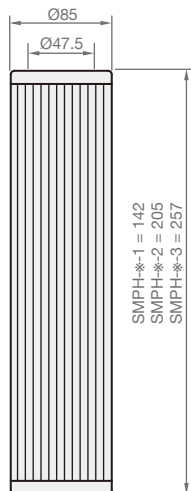
HOUSING PRESSURE DROP CURVE



Density: 32 mm²/s
 Δp varies proportional with density.



* Please spare the distance in order to renew the internal element.



► Order Codes

SE - **SMPH-10-2** - **400M**

① ② ③

| | | |
|---|--------------------------|----------------------------|
| ① | ► Elements Model Name | SE |
| ② | ► Filter Model Name | SMPH-10, 12-1, 2, 3 |
| ③ | ► Type of Filter Element | 400M, 700M, A10, A25, etc. |

► Material of Filtering Element

1. M represents metal material, a indicates glass fiber.
2. Regular order of metal element : 100M, 200M, 300M, 400M, 700M, etc.
3. Regular order of glass fiber element : A3, A5, A10, A25, A40, etc.

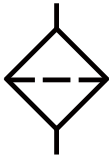
► Mesh to Micron Conversion Chart

| Mesh | μm | Mesh | μm |
|------|-----|------|----|
| 20 | 850 | 200 | 75 |
| 40 | 425 | 250 | 63 |
| 60 | 250 | 300 | 50 |
| 100 | 150 | 400 | 40 |
| 120 | 125 | 700 | 25 |
| 150 | 106 | 1450 | 10 |

DHP-04



SYMBOLS



ORDER CODES

DHP-04 - **1** - **T40** - **N** - **N**

1
2
3
4
5

| | | | |
|----------|-------------------------------------|---------------|--------------------------|
| 1 | Model Name | DHP-04 | |
| 2 | Type & Thread Connection | 1 | BSP, NPT, SAE 1/2", 3/8" |
| | | 2 | BSP, NPT, SAE 1/2" |
| | | 3 | BSP, NPT, SAE 1/2" |
| 3 | Type of Filter Element | A3 | fiber 3um, B ≥ 1000 |
| | | A6 | fiber 6um, B ≥ 1000 |
| | | A10 | fiber 10um, B ≥ 1000 |
| | | A25 | fiber 25um, B ≥ 1000 |
| | | T40 | wire mesh 40um |
| 4 | Type of Pressure Indicator | N | with plug |
| | | D1 | visual |
| | | D2 | visual-electrical |
| 5 | Seals | N | NBR |
| | | V | viton |

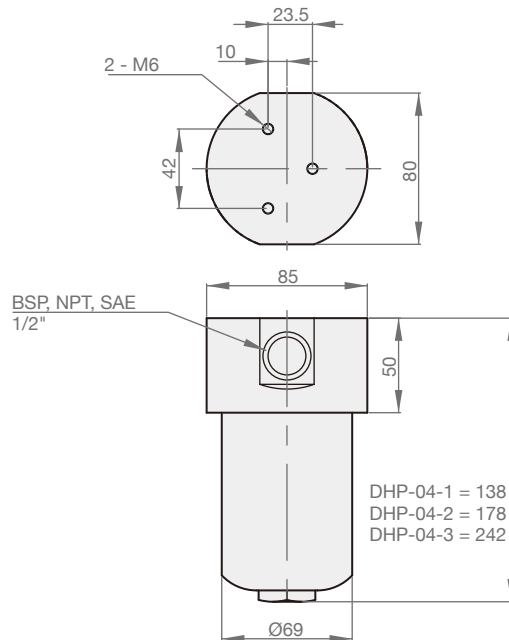
MODEL SPEC.

| Model | Thread Connection (BSP, NPT, SAE) | Type of Filter Element | Flow Rate (l/min) | Max. Pressure (bar) | Operational Pressure (bar) | Weight (kg) |
|----------|--------------------------------------|---------------------------|----------------------|------------------------|-------------------------------|----------------|
| DHP-04-1 | 1/2", 3/8" | A3 | 15 | 140 | 105 | 0.9 |
| | | A6 | 20 | | | |
| | | A10 | 35 | | | |
| | | A25 | 50 | | | |
| | | T40 | 75 | | | |
| DHP-04-2 | 1/2" | A3 | 20 | 140 | 105 | 1.2 |
| | | A6 | 35 | | | |
| | | A10 | 50 | | | |
| | | A25 | 70 | | | |
| | | T40 | 90 | | | |
| DHP-04-3 | 1/2" | A3 | 30 | 140 | 105 | 1.4 |
| | | A6 | 40 | | | |
| | | A10 | 60 | | | |
| | | A25 | 80 | | | |
| | | T40 | 100 | | | |

* The pressure indicator and the element are not included in weight.

DIMENSION

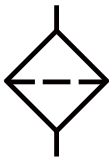
(UNIT : mm)



DHP-06



SYMBOLS



ORDER CODES

DHP-06 - **2** - **A6** - **D1** - **N**

1
2
3
4
5

| | | | |
|----------|-------------------------------------|---------------|----------------------|
| 1 | Model Name | DHP-06 | |
| 2 | Type & Thread Connection | 1 | BSP, NPT, SAE 3/4" |
| | | 2 | BSP, NPT, SAE 3/4" |
| 3 | Type of Filter Element | A3 | fiber 3um, B ≥ 1000 |
| | | A6 | fiber 6um, B ≥ 1000 |
| | | A10 | fiber 10um, B ≥ 1000 |
| | | A25 | fiber 25um, B ≥ 1000 |
| | | T40 | wire mesh 40um |
| 4 | Type of Pressure Indicator | N | with plug |
| | | D1 | visual |
| | | D2 | visual-electrical |
| 5 | Seals | N | NBR |
| | | V | viton |

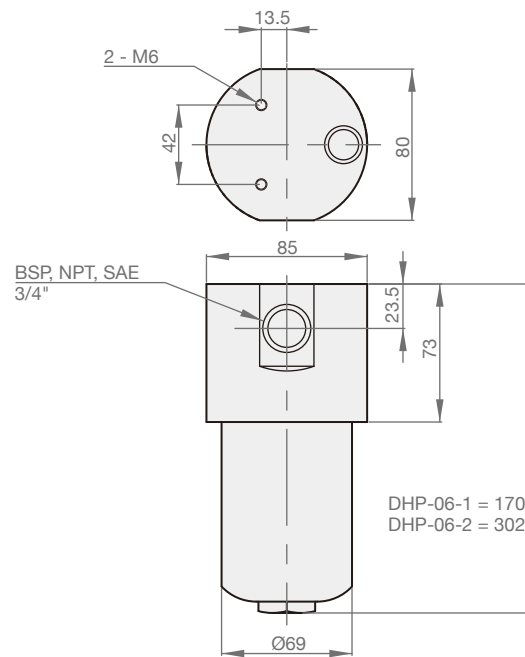
MODEL SPEC.

| Model | Thread Connection (BSP, NPT, SAE) | Type of Filter Element | Flow Rate (l/min) | Max. Pressure (bar) | Operational Pressure (bar) | Weight (kg) |
|----------|--------------------------------------|---------------------------|----------------------|------------------------|-------------------------------|----------------|
| DHP-06-1 | 3/4" | A3 | 15 | 245 | 210 | 1.6 |
| | | A6 | 20 | | | |
| | | A10 | 35 | | | |
| | | A25 | 50 | | | |
| | | T40 | 75 | | | |
| DHP-06-2 | 3/4" | A3 | 35 | 245 | 210 | 2.3 |
| | | A6 | 60 | | | |
| | | A10 | 70 | | | |
| | | A25 | 90 | | | |
| | | T40 | 120 | | | |

* The pressure indicator and the element are not included in weight.

DIMENSION

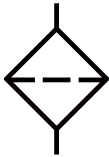
(UNIT : mm)



DHHP-08



SYMBOLS



ORDER CODES

DHHP-08 - **3** - **A6** - **D1** - **N**

1
2
3
4
5

| | | |
|--|----------------|----------------------|
| 1 ▶ Model Name | DHHP-08 | |
| 2 ▶ Type & Thread Connection | 1 | BSP, NPT, SAE 1" |
| | 2 | BSP, NPT, SAE 1" |
| | 3 | BSP, NPT, SAE 1" |
| 3 ▶ Type of Filter Element | A3 | fiber 3um, B ≥ 1000 |
| | A6 | fiber 6um, B ≥ 1000 |
| | A10 | fiber 10um, B ≥ 1000 |
| | A25 | fiber 25um, B ≥ 1000 |
| | T40 | wire mesh 40um |
| 4 ▶ Type of Pressure Indicator | N | with plug |
| | D1 | visual |
| | D2 | visual-electrical |
| 5 ▶ Seals | N | NBR |
| | V | viton |

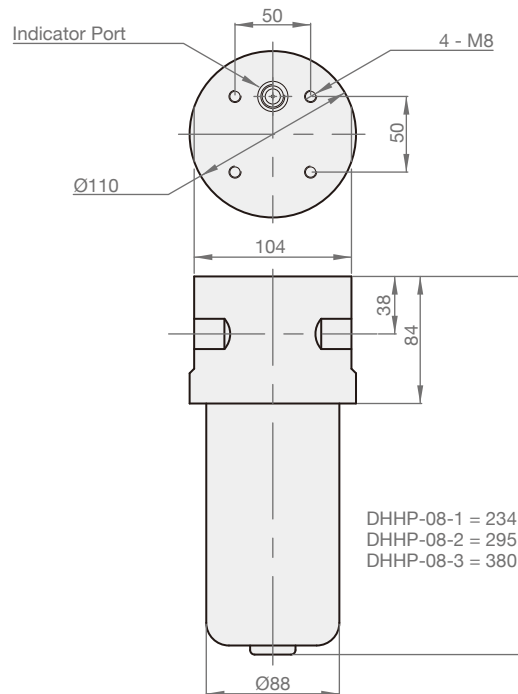
MODEL SPEC.

| Model | Thread Connection (BSP, NPT, SAE) | Type of Filter Element | Flow Rate (l/min) | Max. Pressure (bar) | Operational Pressure (bar) | Weight (kg) |
|-----------|--------------------------------------|---------------------------|----------------------|------------------------|-------------------------------|----------------|
| DHHP-08-1 | 1" | A3 | 70 | 245 | 210 | 2.4 |
| | | A6 | 80 | | | |
| | | A10 | 90 | | | |
| | | A25 | 100 | | | |
| | | T40 | 120 | | | |
| DHHP-08-2 | 1" | A3 | 90 | 245 | 210 | 3.2 |
| | | A6 | 100 | | | |
| | | A10 | 110 | | | |
| | | A25 | 120 | | | |
| | | T40 | 140 | | | |
| DHHP-08-3 | 1" | A3 | 110 | 245 | 210 | 3.9 |
| | | A6 | 120 | | | |
| | | A10 | 130 | | | |
| | | A25 | 150 | | | |
| | | T40 | 170 | | | |

* The pressure indicator and the element are not included in weight.

DIMENSION

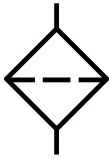
(UNIT : mm)



DHHP-10



SYMBOLS



ORDER CODES

DHHP-10 - **2** - **A25** - **D2** - **N**

1
2
3
4
5

| | | |
|--|----------------|----------------------|
| 1 ▶ Model Name | DHHP-10 | |
| 2 ▶ Type & Thread Connection | 1 | BSP, NPT, SAE 1 1/4" |
| | 2 | BSP, NPT, SAE 1 1/2" |
| | 3 | BSP, NPT, SAE 2" |
| 3 ▶ Type of Filter Element | A3 | fiber 3um, B ≥ 1000 |
| | A6 | fiber 6um, B ≥ 1000 |
| | A10 | fiber 10um, B ≥ 1000 |
| | A25 | fiber 25um, B ≥ 1000 |
| | T40 | wire mesh 40um |
| 4 ▶ Type of Pressure Indicator | N | with plug |
| | D1 | visual |
| | D2 | visual-electrical |
| 5 ▶ Seals | N | NBR |
| | V | viton |

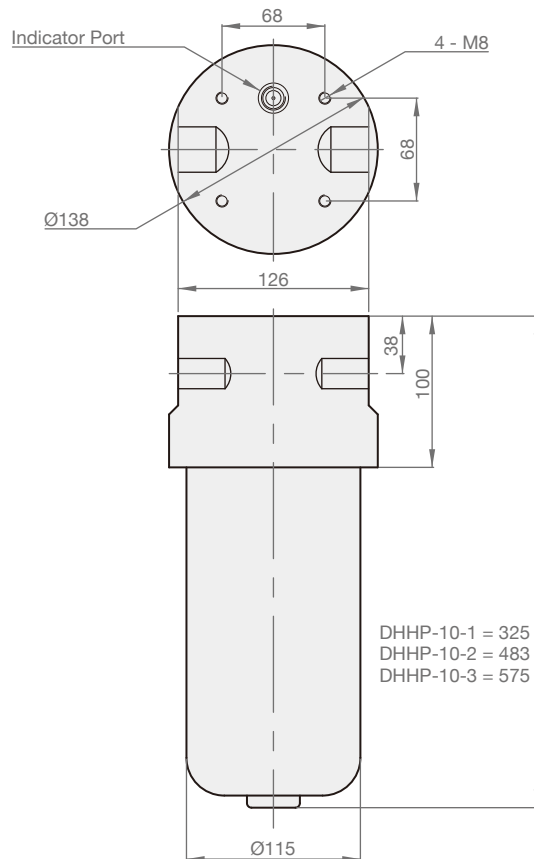
MODEL SPEC.

| Model | Thread Connection (BSP, NPT, SAE) | Type of Filter Element | Flow Rate (l/min) | Max. Pressure (bar) | Operational Pressure (bar) | Weight (kg) |
|-----------|--------------------------------------|---------------------------|----------------------|------------------------|-------------------------------|----------------|
| DHHP-10-1 | 1 1/4" | A3 | 140 | 250 | 210 | 7.1 |
| | | A6 | 240 | | | |
| | | A10 | 290 | | | |
| | | A25 | 360 | | | |
| | | T40 | 400 | | | |
| DHHP-10-2 | 1 1/2" | A3 | 180 | 250 | 210 | 8.9 |
| | | A6 | 300 | | | |
| | | A10 | 360 | | | |
| | | A25 | 450 | | | |
| | | T40 | 500 | | | |
| DHHP-10-3 | 2" | A3 | 250 | 250 | 210 | 9.5 |
| | | A6 | 360 | | | |
| | | A10 | 450 | | | |
| | | A25 | 500 | | | |
| | | T40 | 600 | | | |

* The pressure indicator and the element are not included in weight.

DIMENSION

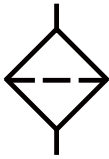
(UNIT : mm)



HHP-03



SYMBOLS



ORDER CODES

HHP - **03** - **T40** - **D2** - **N**

① ② ③ ④ ⑤

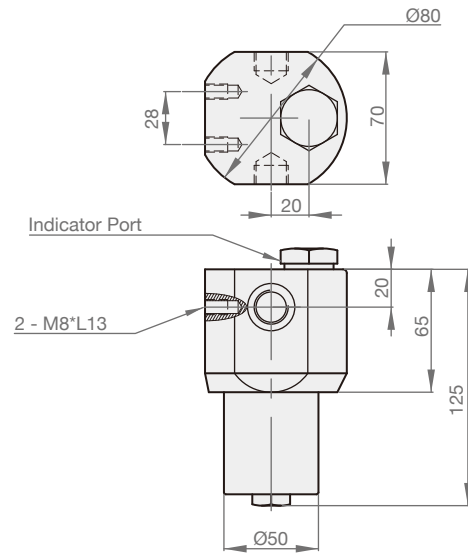
| | | | |
|-----|-----------------------------------|------------|----------------------|
| ① ▶ | Model Name | HHP | |
| ② ▶ | Thread Connection | 03 | BSP, NPT, SAE 3/8" |
| ③ ▶ | Type of Filter Element | A3 | fiber 3um, B ≥ 1000 |
| | | A6 | fiber 6um, B ≥ 1000 |
| | | A10 | fiber 10um, B ≥ 1000 |
| | | A25 | fiber 25um, B ≥ 1000 |
| | | T40 | wire mesh 40um |
| ④ ▶ | Type of Pressure Indicator | N | with plug |
| | | D1 | visual |
| | | D2 | visual-electrical |
| ⑤ ▶ | Seals | N | NBR |
| | | V | viton |

MODEL SPEC.

| Model | Thread Connection (BSP, NPT, SAE) | Type of Filter Element | Flow Rate (l/min) | Max. Pressure (bar) | Operational Pressure (bar) | Weight (kg) |
|--------|--------------------------------------|---------------------------|----------------------|------------------------|-------------------------------|----------------|
| HHP-03 | 3/8" | A3 | 3.5 | 700 | 630 | 2.5 |
| | | A6 | 5 | | | |
| | | A10 | 7 | | | |
| | | A25 | 10 | | | |
| | | T40 | 15 | | | |

DIMENSION

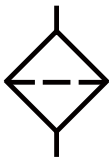
(UNIT : mm)



HHPG-03



SYMBOLS



ORDER CODES

HHP **G** - **03** - **A25** - **D1** - **N**

① ② ③ ④ ⑤ ⑥

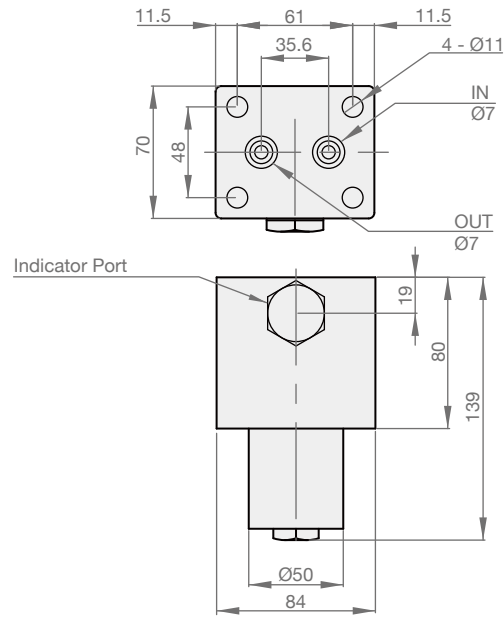
| | | | |
|-----|-----------------------------------|------------|----------------------|
| ① ▶ | Model Name | HHP | |
| ② ▶ | Mounting | G | sub-plate mounted |
| ③ ▶ | Thread Connection | 03 | BSP, NPT, SAE 3/8" |
| ④ ▶ | Type of Filter Element | A3 | fiber 3um, B ≥ 1000 |
| | | A6 | fiber 6um, B ≥ 1000 |
| | | A10 | fiber 10um, B ≥ 1000 |
| | | A25 | fiber 25um, B ≥ 1000 |
| | | T40 | wire mesh 40um |
| ⑤ ▶ | Type of Pressure Indicator | N | with plug |
| | | D1 | visual |
| | | D2 | visual-electrical |
| ⑥ ▶ | Seals | N | NBR |
| | | V | viton |

MODEL SPEC.

| Model | Thread Connection (BSP, NPT, SAE) | Type of Filter Element | Flow Rate (l/min) | Max. Pressure (bar) | Operational Pressure (bar) | Weight (kg) |
|---------|--------------------------------------|---------------------------|----------------------|------------------------|-------------------------------|----------------|
| HHPG-03 | 3/8" | A3 | 3.5 | 700 | 630 | 3.5 |
| | | A6 | 5 | | | |
| | | A10 | 7 | | | |
| | | A25 | 10 | | | |
| | | T40 | 15 | | | |

DIMENSION

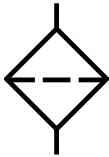
(UNIT : mm)



HP-06



SYMBOLS



ORDER CODES

HP-06 - **2** - **A3** - **D1** - **N**

① ② ③ ④ ⑤

| | | | |
|-----|-------------------------------------|--------------|----------------------|
| ① ▶ | Model Name | HP-06 | |
| ② ▶ | Type & Thread Connection | 1 | BSP, NPT, SAE 3/4" |
| | | 2 | BSP, NPT, SAE 3/4" |
| | | 3 | BSP, NPT, SAE 3/4" |
| ③ ▶ | Type of Filter Element | A3 | fiber 3um, B ≥ 1000 |
| | | A6 | fiber 6um, B ≥ 1000 |
| | | A10 | fiber 10um, B ≥ 1000 |
| | | A25 | fiber 25um, B ≥ 1000 |
| | | T40 | wire mesh 40um |
| ④ ▶ | Type of Pressure Indicator | N | with plug |
| | | D1 | visual |
| | | D2 | visual-electrical |
| ⑤ ▶ | Seals | N | NBR |
| | | V | viton |

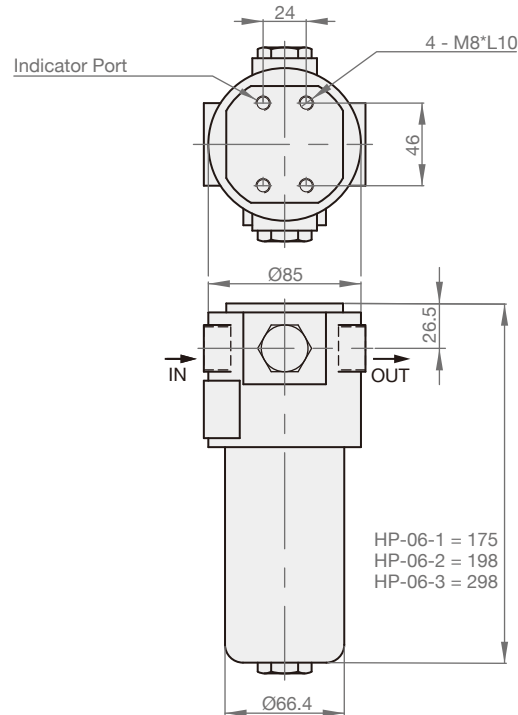
MODEL SPEC.

| Model | Thread Connection (BSP, NPT, SAE) | Type of Filter Element | Flow Rate (l/min) | Max. Pressure (bar) | Operational Pressure (bar) | Weight (kg) |
|---------|--------------------------------------|---------------------------|----------------------|------------------------|-------------------------------|----------------|
| HP-06-1 | 3/4" | A3 | 15 | 350 | 280 | 3.6 |
| | | A6 | 20 | | | |
| | | A10 | 35 | | | |
| | | A25 | 50 | | | |
| | | T40 | 75 | | | |
| HP-06-2 | 3/4" | A3 | 20 | 350 | 280 | 3.9 |
| | | A6 | 35 | | | |
| | | A10 | 50 | | | |
| | | A25 | 70 | | | |
| | | T40 | 90 | | | |
| HP-06-3 | 3/4" | A3 | 35 | 350 | 280 | 5 |
| | | A6 | 60 | | | |
| | | A10 | 70 | | | |
| | | A25 | 90 | | | |
| | | T40 | 120 | | | |

* The pressure indicator and the element are not included in weight.

DIMENSION

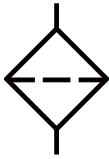
(UNIT : mm)



HP-08



SYMBOLS



ORDER CODES

HP-08 - 1 - A6 - D2 - N

1
2
3
4
5

| | | | |
|---|------------------------------|-------|---------------------------|
| 1 | ▶ Model Name | HP-08 | |
| 2 | ▶ Type & Thread Connection | 1 | BSP, NPT, SAE 1" |
| | | 2 | BSP, NPT, SAE 1" |
| 3 | ▶ Type of Filter Element | A3 | fiber 3um, B \geq 1000 |
| | | A6 | fiber 6um, B \geq 1000 |
| | | A10 | fiber 10um, B \geq 1000 |
| | | A25 | fiber 25um, B \geq 1000 |
| | | T40 | wire mesh 40um |
| 4 | ▶ Type of Pressure Indicator | N | with plug |
| | | D1 | visual |
| | | D2 | visual-electrical |
| 5 | ▶ Seals | N | NBR |
| | | V | viton |

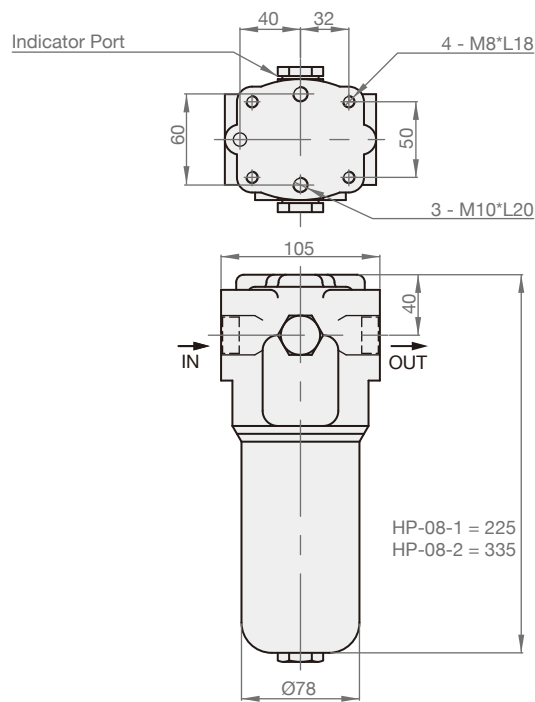
MODEL SPEC.

| Model | Thread Connection (BSP, NPT, SAE) | Type of Filter Element | Flow Rate (l/min) | Max. Pressure (bar) | Operational Pressure (bar) | Weight (kg) |
|---------|--------------------------------------|---------------------------|----------------------|------------------------|-------------------------------|----------------|
| HP-08-1 | 1" | A3 | 35 | 350 | 280 | 6.8 |
| | | A6 | 60 | | | |
| | | A10 | 70 | | | |
| | | A25 | 90 | | | |
| | | T40 | 120 | | | |
| HP-08-2 | 1" | A3 | 70 | 350 | 280 | 8.3 |
| | | A6 | 90 | | | |
| | | A10 | 120 | | | |
| | | A25 | 150 | | | |
| | | T40 | 200 | | | |

* The pressure indicator and the element are not included in weight.

DIMENSION

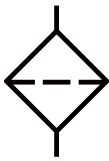
(UNIT : mm)



HP-10



SYMBOLS



ORDER CODES

HP-10 -
 4 -
 A25 -
 N -
 N

①
②
③
④
⑤

| | | | |
|---|---------------------------------------|-------|----------------------|
| ① | ▶ Model Name | HP-10 | |
| ② | ▶ Type & Thread Connection | 1 | BSP, NPT, SAE 1" |
| | | 2 | BSP, NPT, SAE 1 1/4" |
| | | 3 | BSP, NPT, SAE 1 1/2" |
| | | 4 | BSP, NPT, SAE 2" |
| ③ | ▶ Type of Filter Element | A3 | fiber 3um, B ≥ 1000 |
| | | A6 | fiber 6um, B ≥ 1000 |
| | | A10 | fiber 10um, B ≥ 1000 |
| | | A25 | fiber 25um, B ≥ 1000 |
| | | T40 | wire mesh 40um |
| ④ | ▶ Type of Pressure Indicator | N | with plug |
| | | D1 | visual |
| | | D2 | visual-electrical |
| ⑤ | ▶ Seals | N | NBR |
| | | V | viton |

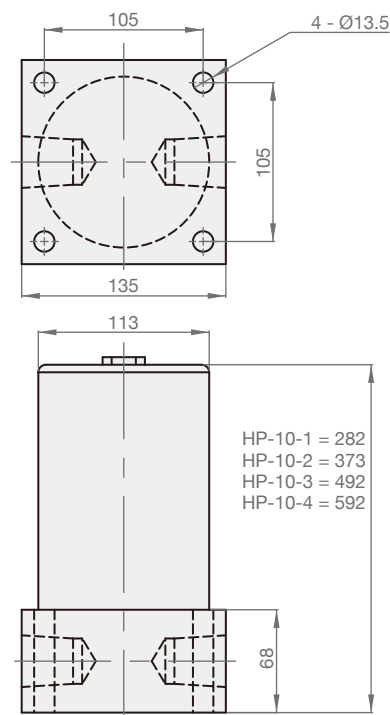
MODEL SPEC.

| Model | Thread Connection (BSP, NPT, SAE) | Type of Filter Element | Flow Rate (l/min) | Max. Pressure (bar) | Operational Pressure (bar) | Weight (kg) |
|---------|--------------------------------------|---------------------------|----------------------|------------------------|-------------------------------|----------------|
| HP-10-1 | 1" | A3 | 70 | 350 | 280 | 15.5 |
| | | A6 | 90 | | | |
| | | A10 | 120 | | | |
| | | A25 | 150 | | | |
| | | T40 | 200 | | | |
| HP-10-2 | 1 1/4" | A3 | 140 | 350 | 280 | 21.2 |
| | | A6 | 240 | | | |
| | | A10 | 290 | | | |
| | | A25 | 360 | | | |
| | | T40 | 400 | | | |
| HP-10-3 | 1 1/2" | A3 | 200 | 350 | 280 | 25.5 |
| | | A6 | 300 | | | |
| | | A10 | 360 | | | |
| | | A25 | 450 | | | |
| | | T40 | 500 | | | |
| HP-10-4 | 2" | A3 | 250 | 350 | 280 | 29.5 |
| | | A6 | 360 | | | |
| | | A10 | 450 | | | |
| | | A25 | 500 | | | |
| | | T40 | 600 | | | |

* The pressure indicator and the element are not included in weight.

DIMENSION

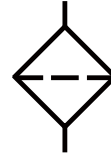
(UNIT : mm)



HPH-06



SYMBOLS



ORDER CODES

HPH -
 06 -
 2 -
 A3 -
 S1

1
 2
 3
 4
 5

| | | | |
|----------|-------------------------------------|----------------------------------|-------------------|
| 1 | ▶ Model Name | HPH | |
| 2 | ▶ Thread Connection | 06 | PT 3/4" |
| 3 | ▶ Type | 2, 3 | |
| 4 | ▶ Type of Filter Element | A3, A5, A10, A25, M10, M25, etc. | |
| 5 | ▶ Type of Pressure Indicator | S1 | visual |
| | | S2 | visual-electrical |

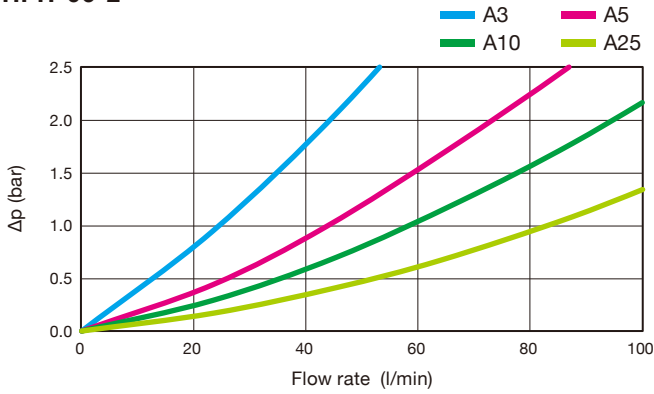
MODEL SPEC.

| Model | Type of Filter Element | Flow Rate (l/min) | Max. Pressure (bar) | Operational Pressure (bar) | Weight (kg) |
|----------|------------------------|-------------------|---------------------|----------------------------|-------------|
| HPH-06-2 | A3 | 28 | 350 | 250 | 3.84 |
| | A5 | 42 | | | |
| | A10 | 50 | | | |
| | A25 | 78 | | | |
| | M10 | 72 | | | |
| | M25 | 100 | | | |
| HPH-06-3 | A3 | 49 | | | |
| | A5 | 58 | | | |
| | A10 | 80 | | | |
| | A25 | 91 | | | |
| | M10 | 83 | | | |
| | M25 | 105 | | | |

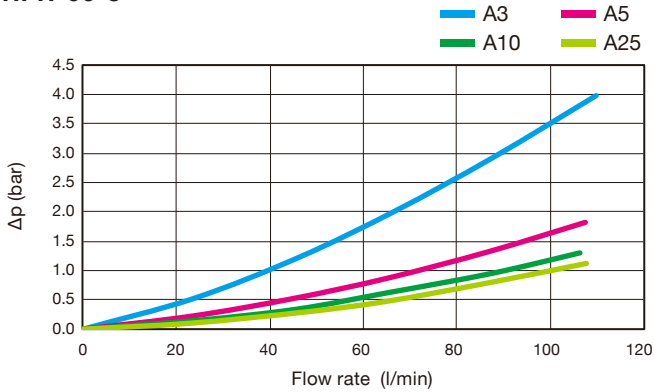
The following filter sizing recommendations are based using a mineral oil fluid at 32 mm²/s (cSt) with a maximum total filter pressure drop of 1.5 bar.

HOUSING PRESSURE DROP CURVE

▶ HPH-06-2



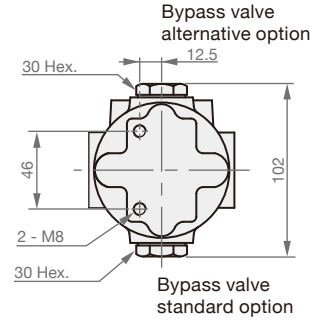
▶ HPH-06-3



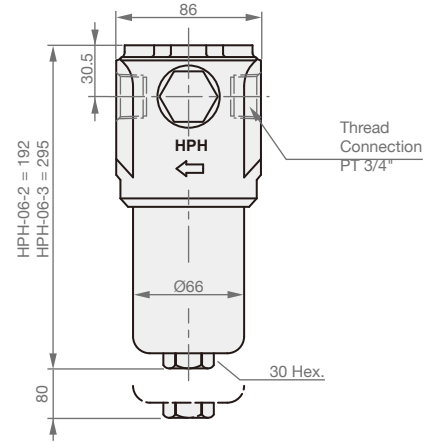
On the condition of oil viscosity at 32 mm²/s
 Δp varies proportional with density.

DIMENSION

(UNIT : mm)



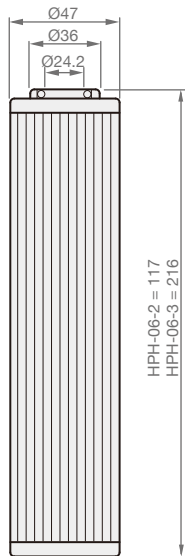
Indicator and bypass valve positions can be inverted.



* Please spare the distance in order to renew the internal element.

ELEMENTS

(UNIT : mm)



▶ Order Codes

SE - **HPH-06-2** - **A3**

① ② ③

| | | |
|---|--------------------------|----------------------------------|
| ① | ▶ Elements Model Name | SE |
| ② | ▶ Filter Model Name | HPH-06-2, HPH-06-3 |
| ③ | ▶ Type of Filter Element | A3, A5, A10, A25, M10, M25, etc. |

▶ Material of Filtering Element

1. M represents metal material, a indicates glass fiber.
2. Regular order of metal element : 100M, 200M, 300M, 400M, 700M, etc.
3. Regular order of glass fiber element : A3, A5, A10, A25, A40, etc.

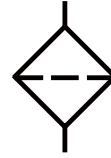
▶ Mesh to Micron Conversion Chart

| Mesh | μm | Mesh | μm |
|------|---------------|------|---------------|
| 20 | 850 | 200 | 75 |
| 40 | 425 | 250 | 63 |
| 60 | 250 | 300 | 50 |
| 100 | 150 | 400 | 40 |
| 120 | 125 | 700 | 25 |
| 150 | 106 | 1450 | 10 |

HPH-08



SYMBOLS



ORDER CODES

HPH - 08 - 2 - A3 - S1

①
②
③
④
⑤

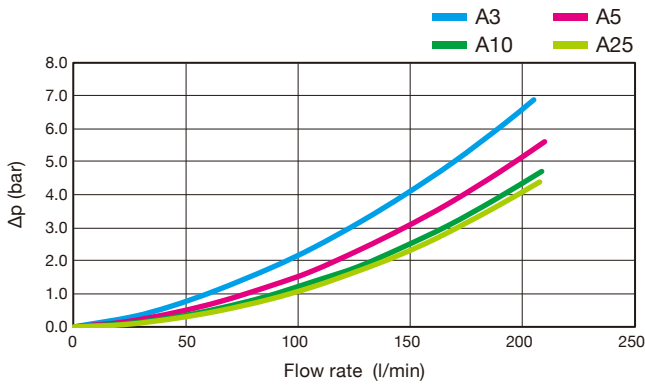
| | | | |
|---|----------------------------|----------------------------------|-------------------|
| ① | Model Name | HPH | |
| ② | Thread Connection | 08 | PT 1" |
| ③ | Type | 2 | |
| ④ | Type of Filter Element | A3, A5, A10, A25, M10, M25, etc. | |
| ⑤ | Type of Pressure Indicator | S1 | visual |
| | | S2 | visual-electrical |

MODEL SPEC.

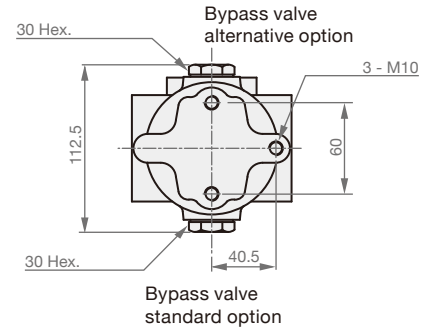
| Model | Type of Filter Element | Flow Rate (l/min) | Max. Pressure (bar) | Operational Pressure (bar) | Weight (kg) |
|----------|------------------------|-------------------|---------------------|----------------------------|-------------|
| HPH-08-2 | A3 | 110 | 350 | 250 | 7.78 |
| | A5 | 115 | | | |
| | A10 | 145 | | | |
| | A25 | 205 | | | |
| | M10 | 172 | | | |
| | M25 | 225 | | | |

The following filter sizing recommendations are based using a mineral oil fluid at 32 mm²/s (cSt) with a maximum total filter pressure drop of 1.5 bar.

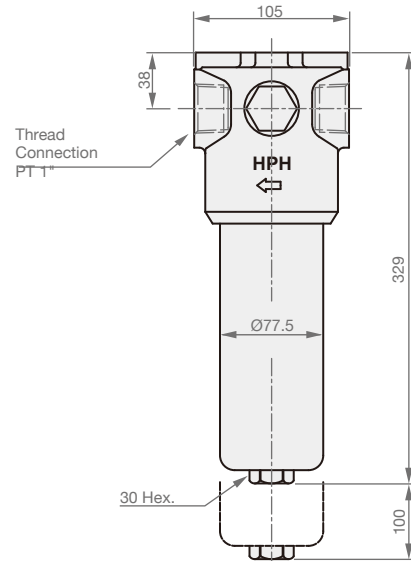
▶ HPH-08-2



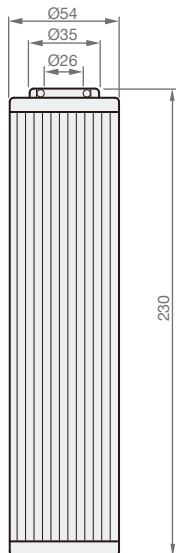
On the condition of oil viscosity at 32 mm²/s
 Δp varies proportional with density.



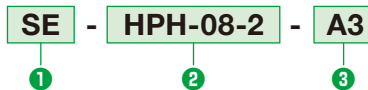
Indicator and bypass valve positions can be inverted.



* Please spare the distance in order to renew the internal element.



▶ Order Codes



| | | |
|---|--------------------------|----------------------------------|
| 1 | ▶ Elements Model Name | SE |
| 2 | ▶ Filter Model Name | HPH-08-2 |
| 3 | ▶ Type of Filter Element | A3, A5, A10, A25, M10, M25, etc. |

▶ Material of Filtering Element

1. M represents metal material, a indicates glass fiber.
2. Regular order of metal element : 100M, 200M, 300M, 400M, 700M, etc.
3. Regular order of glass fiber element : A3, A5, A10, A25, A40, etc.

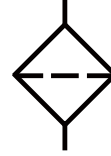
▶ Mesh to Micron Conversion Chart

| Mesh | µm | Mesh | µm |
|------|-----|------|----|
| 20 | 850 | 200 | 75 |
| 40 | 425 | 250 | 63 |
| 60 | 250 | 300 | 50 |
| 100 | 150 | 400 | 40 |
| 120 | 125 | 700 | 25 |
| 150 | 106 | 1450 | 10 |

HPH-10/12



SYMBOLS



ORDER CODES

HPH -
 10
B -
 2 -
 A10 -
 S1

| | | | |
|---|----------------------------|------------------------|-------------------|
| ① | Model Name | HPH | |
| ② | Thread Connection | 10 | PT 1 1/4" |
| | | 12 | PT 1 1/2" |
| ③ | Mounting Type | B | solder |
| | | C | thread |
| ④ | Type | 2 | |
| ⑤ | Type of Filter Element | A3, A5, A10, A25, etc. | |
| ⑥ | Type of Pressure Indicator | S1 | visual |
| | | S2 | visual-electrical |

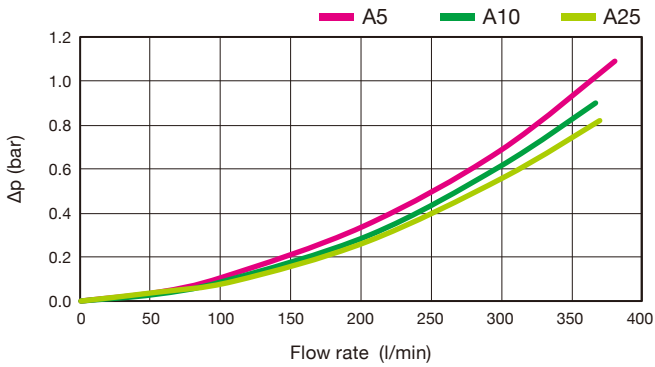
MODEL SPEC.

| Model | Type of Filter Element | Flow Rate (l/min) | Max. Pressure (bar) | Operational Pressure (bar) | Weight (kg) |
|----------|------------------------|-------------------|---------------------|----------------------------|-------------|
| HPH-10-2 | A3 | 192 | 350 | 250 | 15.04 |
| | A5 | 220 | | | |
| | A10 | 300 | | | |
| | A25 | 378 | | | |

The following filter sizing recommendations are based using a mineral oil fluid at 32 mm²/s (cSt) with a maximum total filter pressure drop of 1.5 bar.

HOUSING PRESSURE DROP CURVE

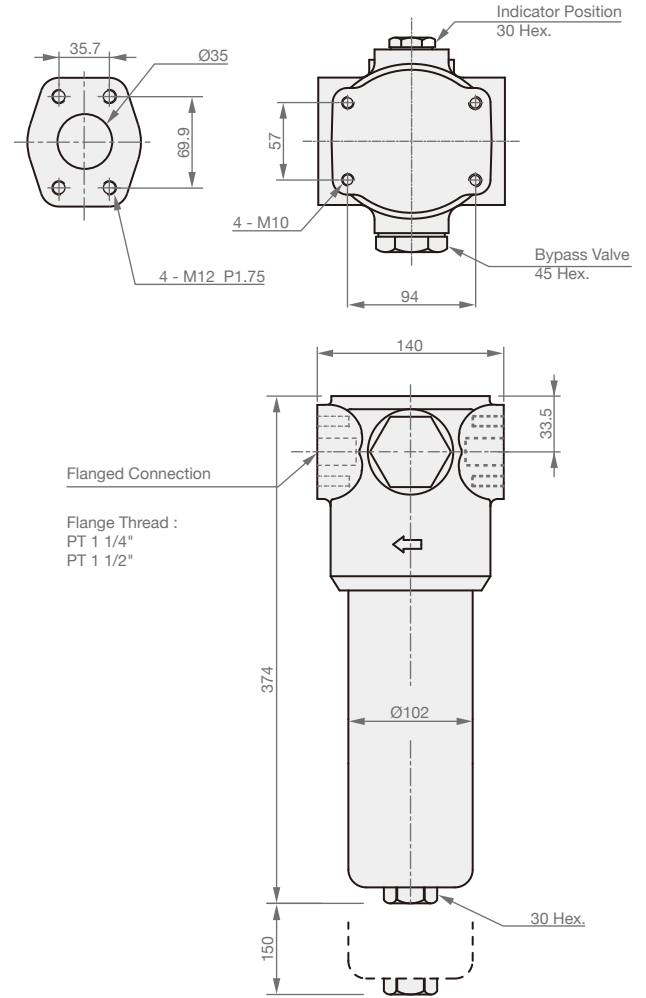
▶ HPH-10



On the condition of oil viscosity at 32 mm²/s
 Δp varies proportional with density.

DIMENSION

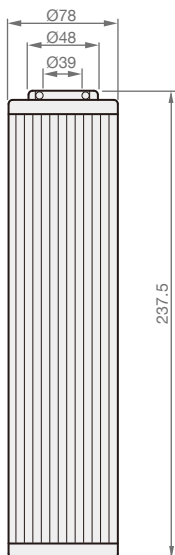
(UNIT : mm)



* Please spare the distance in order to renew the internal element.

ELEMENTS

(UNIT : mm)



▶ Order Codes

SE - **HPH-10B-2** - **A10**

① ② ③

| | | |
|-----|------------------------|------------------------|
| ① ▶ | Elements Model Name | SE |
| ② ▶ | Filter Model Name | HPH-10B-2, HPH-10C-2 |
| ③ ▶ | Type of Filter Element | A3, A5, A10, A25, etc. |

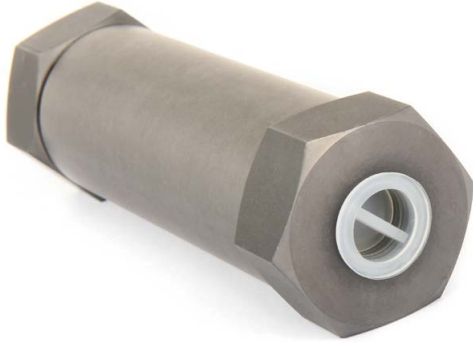
▶ Material of Filtering Element

1. M represents metal material, a indicates glass fiber.
2. Regular order of metal element : 100M, 200M, 300M, 400M, 700M, etc.
3. Regular order of glass fiber element : A3, A5, A10, A25, A40, etc.

▶ Mesh to Micron Conversion Chart

| Mesh | μm | Mesh | μm |
|------|-----|------|----|
| 20 | 850 | 200 | 75 |
| 40 | 425 | 250 | 63 |
| 60 | 250 | 300 | 50 |
| 100 | 150 | 400 | 40 |
| 120 | 125 | 700 | 25 |
| 150 | 106 | 1450 | 10 |

ILF



SYMBOLS



ORDER CODES

ILF - **04** - **700M** - **P**

① ② ③ ④

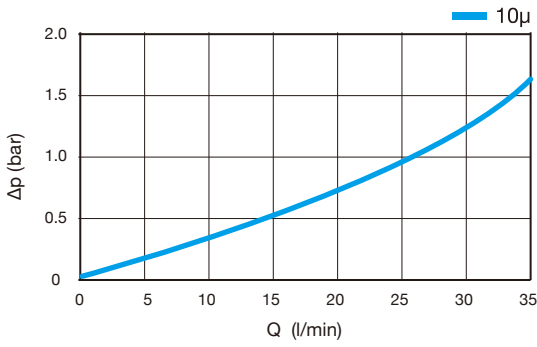
| | | | |
|---|------------------------|------------------------------|------|
| ① | Model Name | ILF | |
| ② | Thread Connection | 02 | 1/4" |
| | | 03 | 3/8" |
| | | 04 | 1/2" |
| ③ | Type of Filter Element | A3, A5, A10, A25, 400M, 700M | |
| ④ | Thread | P | PT |
| | | B | BSPP |
| | | N | NPT |
| | | S | SAE |

MODEL SPEC.

| Model | Flow Rate (l/min) | Max. Pressure (bar) | Operational Pressure (bar) | Weight (kg) |
|-------|----------------------|------------------------|-------------------------------|----------------|
| ILF | 35 | 420 | 350 | 1.16 |

* The element are not included in weight.

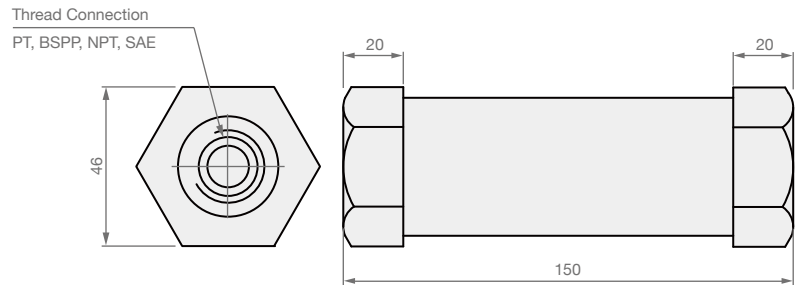
HOUSING PRESSURE DROP CURVE



On the condition of oil viscosity at 32 mm²/s
 Δp varies proportional with density.

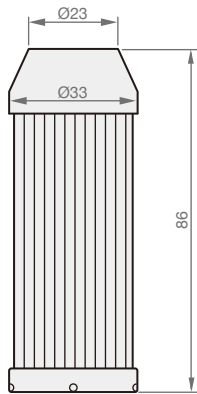
DIMENSION

(UNIT : mm)



ELEMENTS

(UNIT : mm)



► Order Codes

SE - **ILF** - **700M**

① ② ③

| | | |
|---|--------------------------|------------------------------|
| ① | ► Elements Model Name | SE |
| ② | ► Filter Model Name | ILF |
| ③ | ► Type of Filter Element | A3, A5, A10, A25, 400M, 700M |

► Material of Filtering Element

1. M represents metal material, a indicates glass fiber.
2. Regular order of metal element : 100M, 200M, 300M, 400M, 700M, etc.
3. Regular order of glass fiber element : A3, A5, A10, A25, A40, etc.

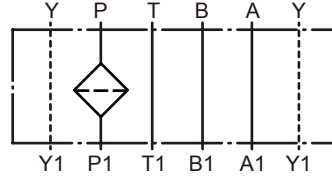
► Mesh to Micron Conversion Chart

| Mesh | μm | Mesh | μm |
|------|-----|------|----|
| 20 | 850 | 200 | 75 |
| 40 | 425 | 250 | 63 |
| 60 | 250 | 300 | 50 |
| 100 | 150 | 400 | 40 |
| 120 | 125 | 700 | 25 |
| 150 | 106 | 1450 | 10 |

MFP-02



SYMBOLS



ORDER CODES

MFP - **02** - **05** - **S2**

① ② ③ ④

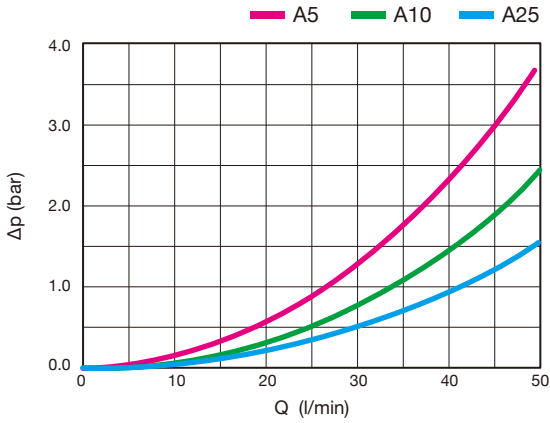
| | | | |
|-----|-----------------------------------|------------|--|
| ① ▶ | Model Name | MFP | |
| ② ▶ | Thread Connection | 02 | PT 1/4" |
| ③ ▶ | Filtration | 05 | 5um ($\beta_{05} >100$ -ISO 4406:1999, level 17/15/12) |
| | | 10 | 10um ($\beta_{10} >100$ -ISO 4406:1999, level 18/16/13) |
| | | 25 | 25um ($\beta_{25} >100$ -ISO 4406:1999, level 19/17/14) |
| ④ ▶ | Type of Pressure Indicator | S1 | visual |
| | | S2 | visual-electrical |

MODEL SPEC.

| Model | Thread Connection (PT) | Max. Operational Pressure (bar) | Weight (kg) |
|--------|------------------------|---------------------------------|-------------|
| MFP-02 | 1/4" | 320 | 3.0 |

* The pressure indicator are not included in weight.

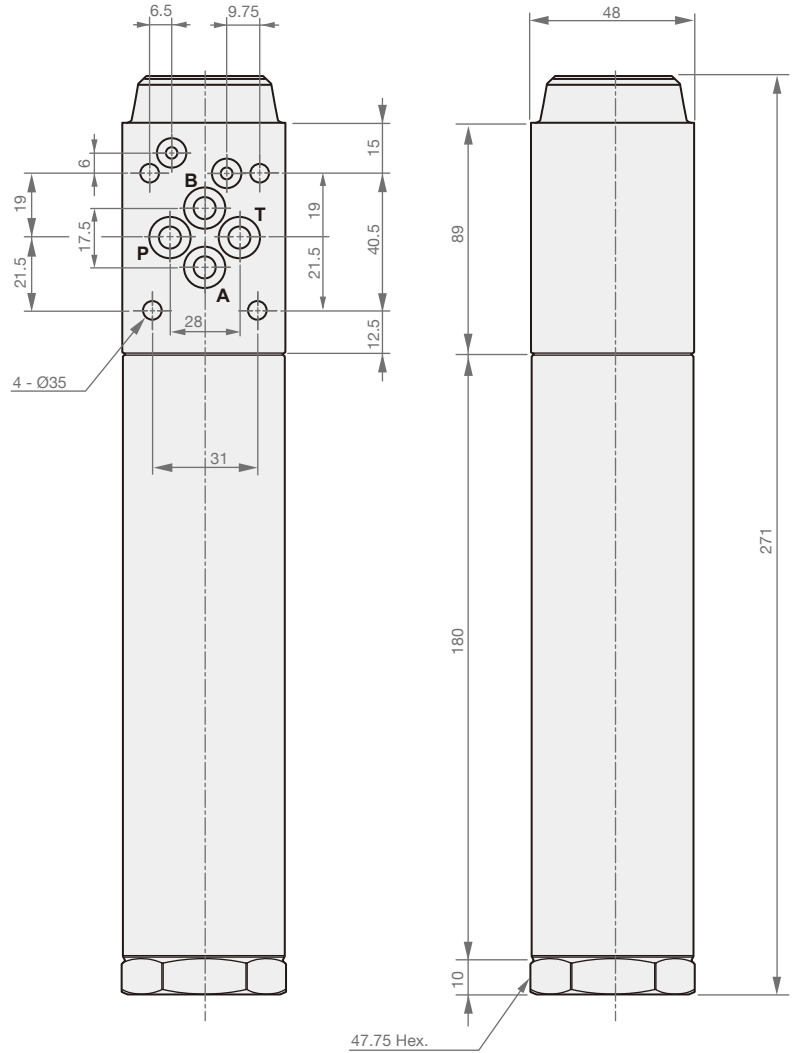
HOUSING PRESSURE DROP CURVE



On the condition of oil viscosity at 32 mm²/s
 Δp varies proportional with density.

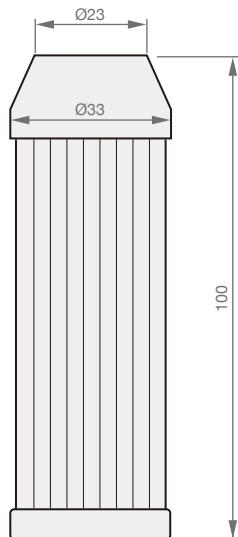
DIMENSION

(UNIT : mm)



ELEMENTS

(UNIT : mm)



► Order Codes

SE - ILF - 700M

① ② ③

| | | |
|---|--------------------------|------------------------------|
| ① | ► Elements Model Name | SE |
| ② | ► Filter Model Name | ILF |
| ③ | ► Type of Filter Element | A3, A5, A10, A25, 400M, 700M |

► Material of Filtering Element

1. M represents metal material, a indicates glass fiber.
2. Regular order of metal element : 100M, 200M, 300M, 400M, 700M, etc.
3. Regular order of glass fiber element : A3, A5, A10, A25, A40, etc.

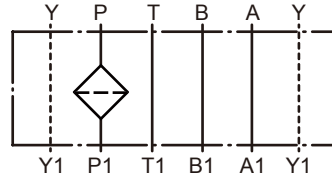
► Mesh to Micron Conversion Chart

| Mesh | μm | Mesh | μm |
|------|-----|------|----|
| 20 | 850 | 200 | 75 |
| 40 | 425 | 250 | 63 |
| 60 | 250 | 300 | 50 |
| 100 | 150 | 400 | 40 |
| 120 | 125 | 700 | 25 |
| 150 | 106 | 1450 | 10 |

MHF-02



SYMBOLS



ORDER CODES

MHF - **02** - **A3** - **S1**

① ② ③ ④

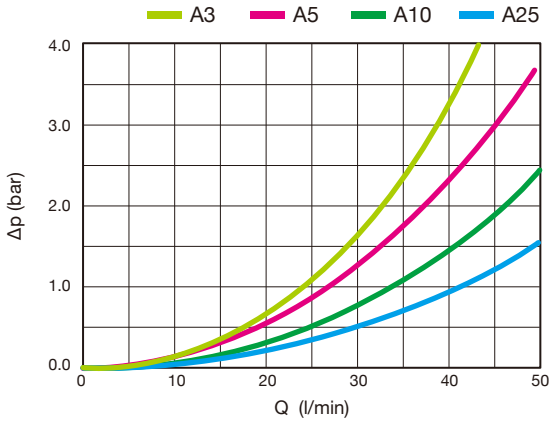
| | | | |
|-----|-----------------------------------|-------------------------|-------------------|
| ① ▶ | Model Name | MHF | |
| ② ▶ | Thread Connection | 02 | PT 1/4" |
| ③ ▶ | Type of Filter Element | A3, A5, A10, A25 | |
| ④ ▶ | Type of Pressure Indicator | S1 | visual |
| | | S2 | visual-electrical |

MODEL SPEC.

| Model | Thread Connection (PT) | Flow Rate (l/min) | Max. Pressure (bar) | Operational Pressure (bar) | Weight (kg) |
|--------|------------------------|------------------------------------|---------------------|----------------------------|-------------|
| MHF-02 | 1/4" | A3:28 A5:34 A10:40 A25:50 | 420 | 350 | 2.4 |

* The pressure indicator and the element are not included in weight.

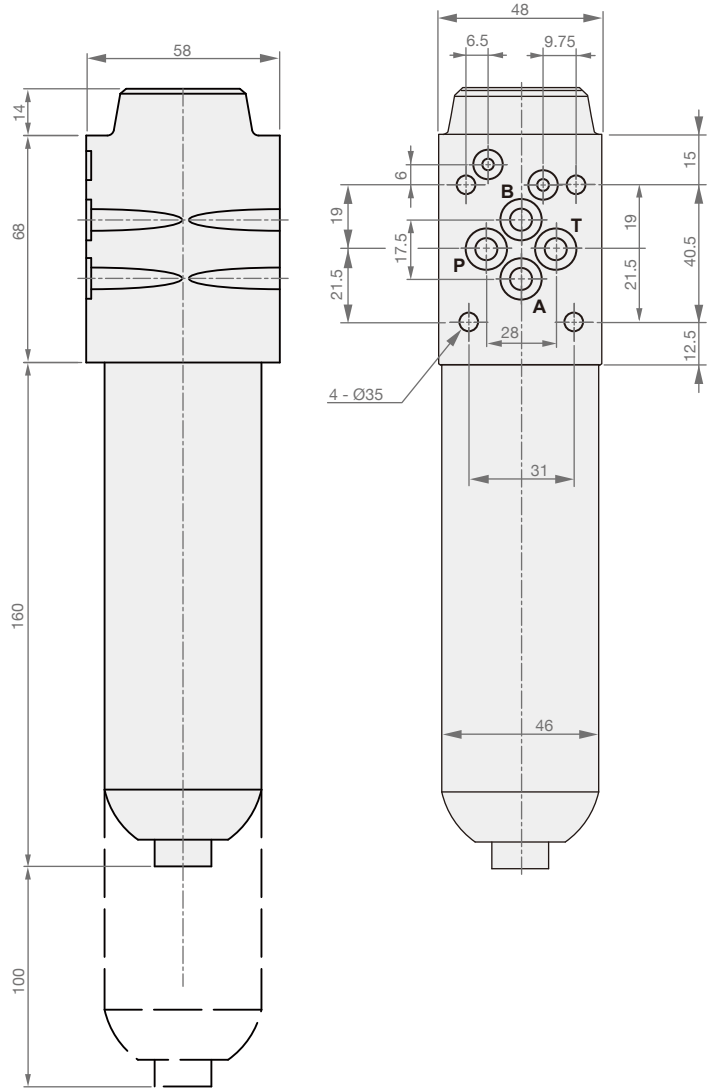
HOUSING PRESSURE DROP CURVE



On the condition of oil viscosity at 32 mm²/s
 Δp varies proportional with density.

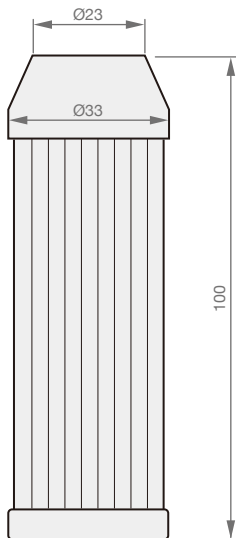
DIMENSION

(UNIT : mm)



ELEMENTS

(UNIT : mm)



► Order Codes

SE - MHF-02 - A3

①

②

③

| | | |
|---|--------------------------|------------------|
| ① | ► Elements Model Name | SE |
| ② | ► Filter Model Name | MHF-02 |
| ③ | ► Type of Filter Element | A3, A5, A10, A25 |

► Material of Filtering Element

1. M represents metal material, a indicates glass fiber.
2. Regular order of metal element : 100M, 200M, 300M, 400M, 700M, etc.
3. Regular order of glass fiber element : A3, A5, A10, A25, A40, etc.

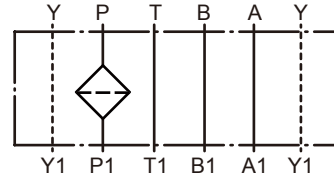
► Mesh to Micron Conversion Chart

| Mesh | μm | Mesh | μm |
|------|-----|------|----|
| 20 | 850 | 200 | 75 |
| 40 | 425 | 250 | 63 |
| 60 | 250 | 300 | 50 |
| 100 | 150 | 400 | 40 |
| 120 | 125 | 700 | 25 |
| 150 | 106 | 1450 | 10 |

HPM-03



SYMBOLS



ORDER CODES

HPM - **03** - **A3** - **D1** - **N**

① ② ③ ④ ⑤

| | | | |
|-----|-----------------------------------|------------|---------------------------|
| ① ▶ | Model Name | HPM | |
| ② ▶ | Thread Connection | 03 | BSP, NPT, SAE 3/8" |
| ③ ▶ | Filtration | A3 | fiber 3um, B \geq 1000 |
| | | A6 | fiber 6um, B \geq 1000 |
| | | A10 | fiber 10um, B \geq 1000 |
| | | A25 | fiber 25um, B \geq 1000 |
| | | T40 | wire mesh 40um |
| ④ ▶ | Type of Pressure Indicator | N | with plug |
| | | D1 | visual |
| | | D2 | visual-electrical |
| ⑤ ▶ | Seals | N | NBR |
| | | V | viton |

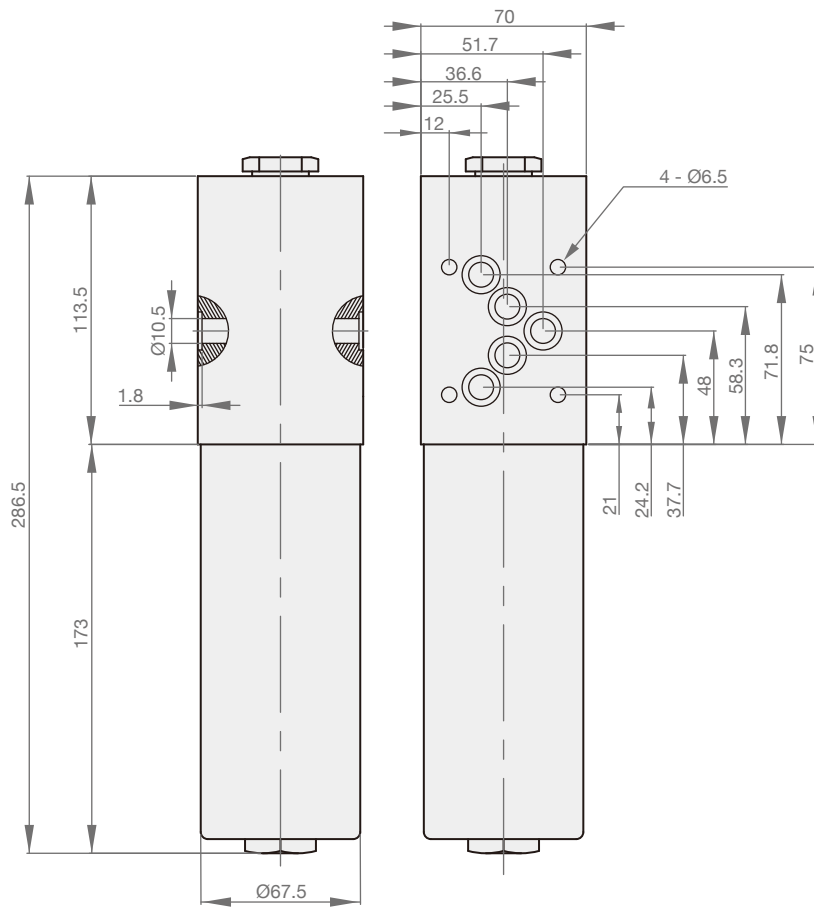
MODEL SPEC.

| Model | Thread Connection (BSP, NPT, SAE) | Type of Filter Element | Flow Rate (l/min) | Max. Pressure (bar) | Operational Pressure (bar) | Weight (kg) |
|--------|--------------------------------------|---------------------------|----------------------|------------------------|-------------------------------|----------------|
| HPM-03 | 3/8" | A3 | 20 | 350 | 280 | 6.5 |
| | | A6 | 35 | | | |
| | | A10 | 50 | | | |
| | | A25 | 70 | | | |
| | | T40 | 90 | | | |

* The pressure indicator and the element are not included in weight.

DIMENSION

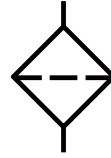
(UNIT : mm)



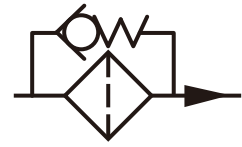
MPH-04



SYMBOLS



no bypass



bypass

ORDER CODES

MPH - 04 - NP - A10

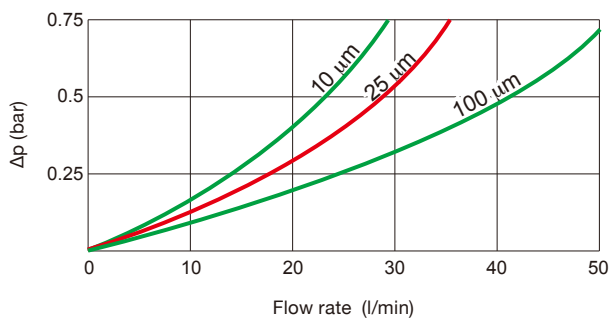
① ② ③ ④

| | | | |
|-----|-------------------------------|----------------------------------|-----------|
| ① ▶ | Model Name | MPH | |
| ② ▶ | Thread Connection | 04 | BSP 1/2" |
| ③ ▶ | Oil Path | NP | no bypass |
| | | P | bypass |
| ④ ▶ | Type of Filter Element | A10, A25, A40, 300M, etc. | |

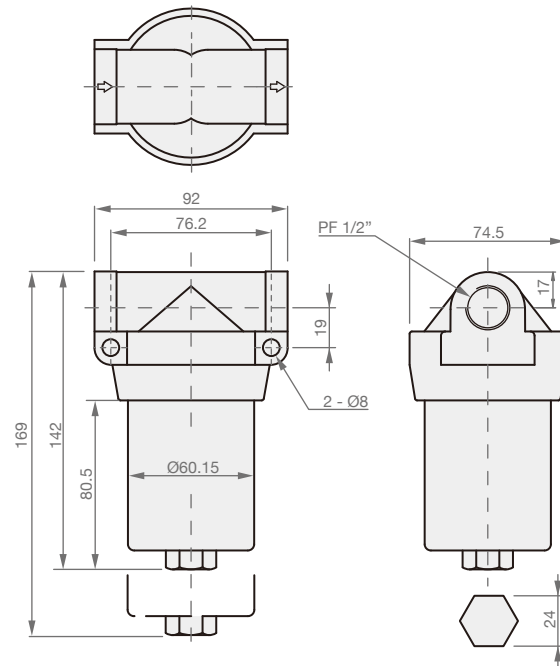
MODEL SPEC.

| Model | Thread Connection (BSP) | Max. Operational Pressure (bar) | Weight (kg) |
|--------|-------------------------|---------------------------------|-------------|
| MPH-04 | 1/2" | 70 | 0.74 |

HOUSING PRESSURE DROP CURVE

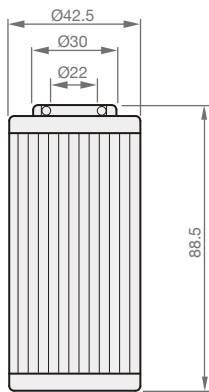


On the condition of oil viscosity at 32 mm²/s
 Δp varies proportional with density.

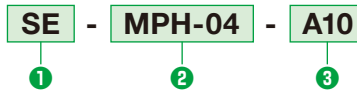


* Please spare the distance in order to renew the internal element.

ELEMENTS



► Order Codes



| | | |
|---|------------------------|---------------------------|
| 1 | Elements Model Name | SE |
| 2 | Filter Model Name | MPH-04 |
| 3 | Type of Filter Element | A10, A25, A40, 300M, etc. |

► Material of Filtering Element

1. M represents metal material, a indicates glass fiber.
2. Regular order of metal element : 100M, 200M, 300M, 400M, 700M, etc.
3. Regular order of glass fiber element : A3, A5, A10, A25, A40, etc.

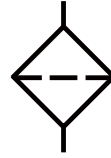
► Mesh to Micron Conversion Chart

| Mesh | µm | Mesh | µm |
|------|-----|------|----|
| 20 | 850 | 200 | 75 |
| 40 | 425 | 250 | 63 |
| 60 | 250 | 300 | 50 |
| 100 | 150 | 400 | 40 |
| 120 | 125 | 700 | 25 |
| 150 | 106 | 1450 | 10 |

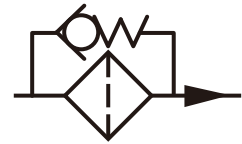
MPH-08



SYMBOLS



no bypass



bypass

ORDER CODES

MPH - **08** - **NP** - **150M** - **S1**

① ② ③ ④ ⑤

| | | | |
|-----|-----------------------------------|------------------------------------|-------------------|
| ① ▶ | Model Name | MPH | |
| ② ▶ | Thread Connection | 08 | PT 1" |
| ③ ▶ | Oil Path | NP | no bypass |
| | | P | bypass |
| ④ ▶ | Type of Filter Element | 100M, 150M, 200M, 250M, etc | |
| ⑤ ▶ | Type of Pressure Indicator | S1 | visual |
| | | S2 | visual-electrical |
| | | G | gauge |

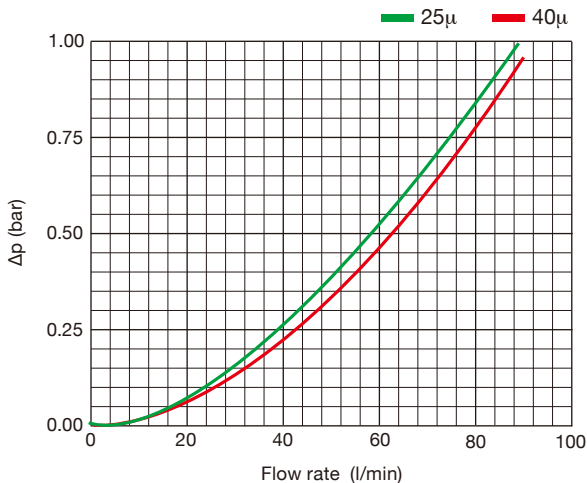
MODEL SPEC.

| Model | Thread Connection (PT) | Operational Pressure (bar) | Max. Operational Pressure (bar) | Weight (kg) |
|--------|------------------------|----------------------------|---------------------------------|-------------|
| MPH-08 | 1" | 70 | 105 | 2.16 |

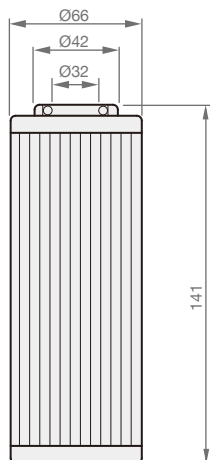
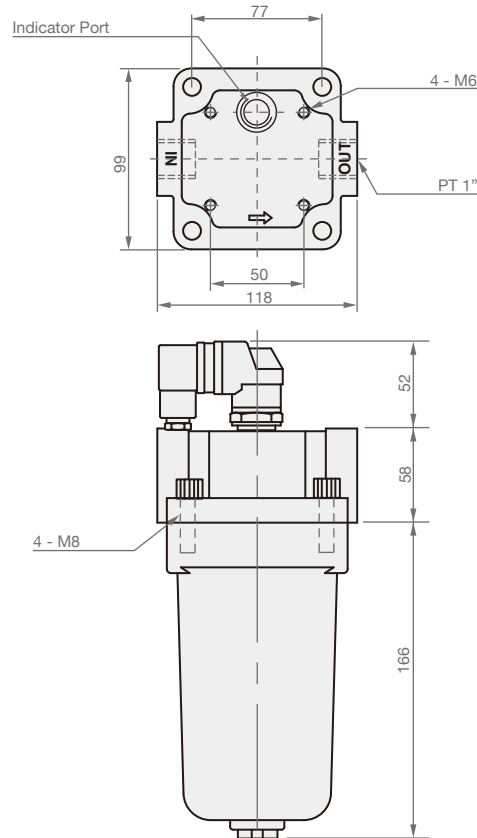
* Pressure indicator is an optional accessory.

* The pressure indicator and the element are not included in weight.

HOUSING PRESSURE DROP CURVE



On the condition of oil viscosity at 32 mm²/s
 Δp varies proportional with density.



► Order Codes

SE - **MPH-08** - **150M**

① ② ③

| | | |
|---|--------------------------|------------------------------|
| ① | ► Elements Model Name | SE |
| ② | ► Filter Model Name | MPH-08 |
| ③ | ► Type of Filter Element | 100M, 150M, 200M, 250M, etc. |

► Material of Filtering Element

1. M represents metal material, a indicates glass fiber.
2. Regular order of metal element : 100M, 200M, 300M, 400M, 700M, etc.
3. Regular order of glass fiber element : A3, A5, A10, A25, A40, etc.

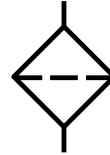
► Mesh to Micron Conversion Chart

| Mesh | µm | Mesh | µm |
|------|-----|------|----|
| 20 | 850 | 200 | 75 |
| 40 | 425 | 250 | 63 |
| 60 | 250 | 300 | 50 |
| 100 | 150 | 400 | 40 |
| 120 | 125 | 700 | 25 |
| 150 | 106 | 1450 | 10 |

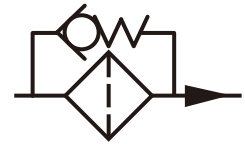
MPH-10/12



SYMBOLS



no bypass



bypass

ORDER CODES

MPH - **10** - **NP** - **A40** - **G**

① ② ③ ④ ⑤

| | | |
|--------------------------------|---------------------------------------|-------------------|
| ① ▶ Model Name | MPH | |
| ② ▶ Thread Connection | 10 | PT 1 1/4" |
| | 12 | PT 1 1/2" |
| ③ ▶ Oil Path | NP | no bypass |
| | P | bypass |
| ④ ▶ Type of Filter Element | 150M, 200M, 250M, A25, A40, A50, etc. | |
| ⑤ ▶ Type of Pressure Indicator | S1 | visual |
| | S2 | visual-electrical |
| | G | gauge |

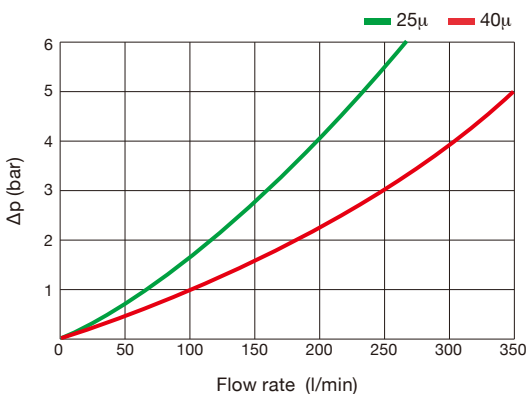
MODEL SPEC.

| Model | Thread Connection (PT) | Operational Pressure (bar) | Max. Operational Pressure (bar) | Weight (kg) |
|--------|------------------------|----------------------------|---------------------------------|-------------|
| MPH-10 | 1 1/4" | 70 | 105 | 4.5 |
| MPH-12 | 1 1/2" | 70 | 105 | 4.5 |

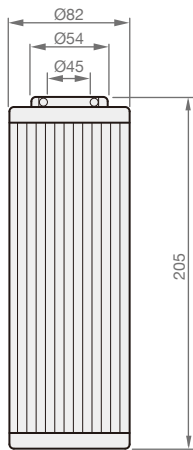
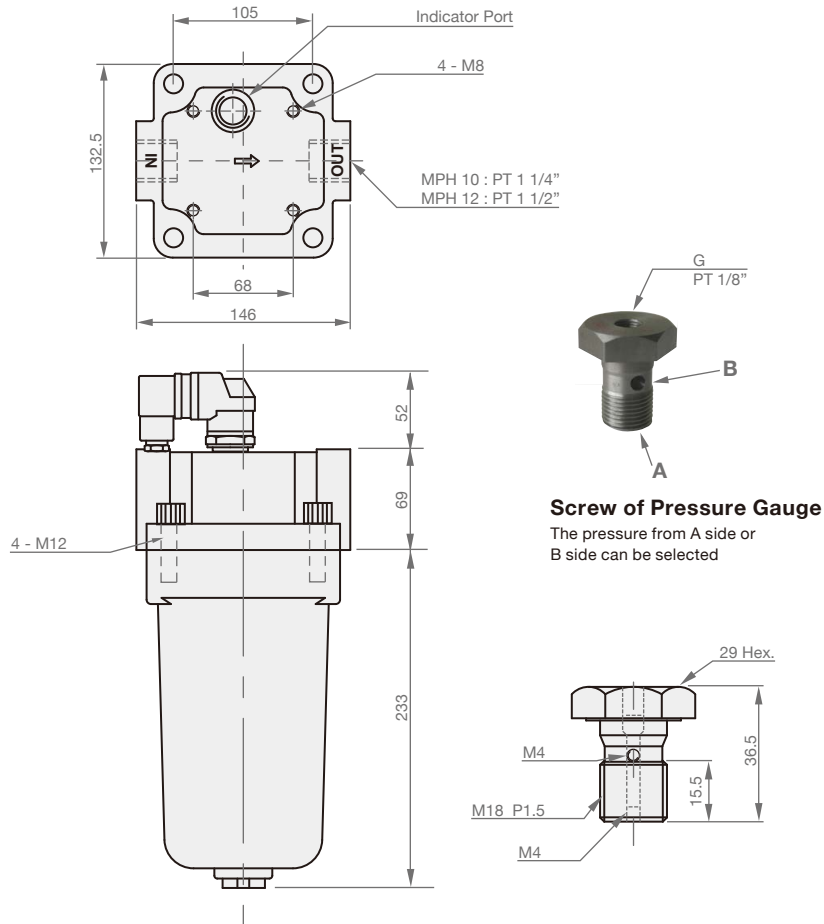
* Pressure indicator is an optional accessory.

* The pressure indicator and the element are not included in weight.

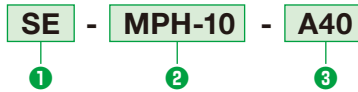
HOUSING PRESSURE DROP CURVE



On the condition of oil viscosity at 32 mm²/s
 Δp varies proportional with density.



► Order Codes



| | | |
|---|--------------------------|---------------------------------------|
| 1 | ► Elements Model Name | SE |
| 2 | ► Filter Model Name | MPH-10, MPH-12 |
| 3 | ► Type of Filter Element | 150M, 200M, 250M, A25, A40, A50, etc. |

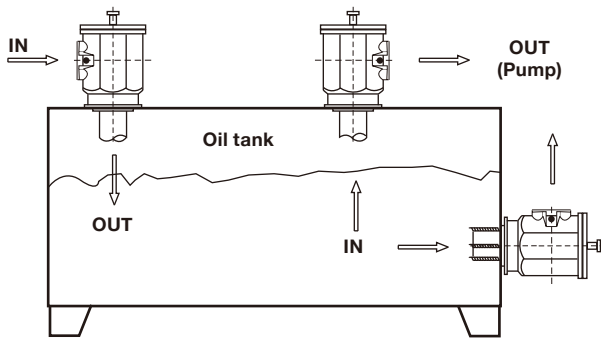
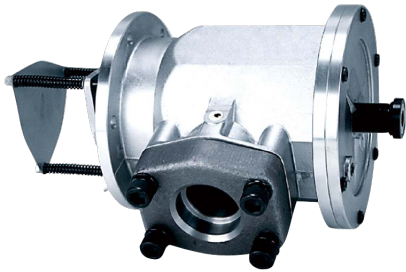
► Material of Filtering Element

1. M represents metal material, a indicates glass fiber.
2. Regular order of metal element : 100M, 200M, 300M, 400M, 700M, etc.
3. Regular order of glass fiber element : A3, A5, A10, A25, A40, etc.

► Mesh to Micron Conversion Chart

| Mesh | µm | Mesh | µm |
|------|-----|------|----|
| 20 | 850 | 200 | 75 |
| 40 | 425 | 250 | 63 |
| 60 | 250 | 300 | 50 |
| 100 | 150 | 400 | 40 |
| 120 | 125 | 700 | 25 |
| 150 | 106 | 1450 | 10 |

FSS



SYMBOLS



ORDER CODES

FSS - **24** - **16B** - **S** **100M** - **C** - **FL**

1 2 3 4 5 6 7

| | | | |
|-----|-----------------------------|------------------------|-----------------------------|
| 1 ▶ | Model Name | FSS | |
| 2 ▶ | Main Port Size | 16 | 2" |
| | | 24 | 3" |
| | | 32 | 4" |
| 3 ▶ | Flange | A | thread connectional type |
| | | B | welding type * |
| 4 ▶ | Filtering Direction | S | suction net |
| | | R | return net |
| 5 ▶ | Precision Filtration | 100M, 120M, 150M, etc. | |
| 6 ▶ | Connection Accessory | None | with triangle rack |
| | | A | thread connectional type |
| | | B | welding type * |
| | | C | without triangle rack |
| | | F | flange |
| 7 ▶ | Optional Accessories | FL | flange as the list below |
| | | S | pressure switch |
| | | G | pressure gauge (for return) |
| | | VG | vacuum gauge (for suction) |
| | | SG | vacuum switch |

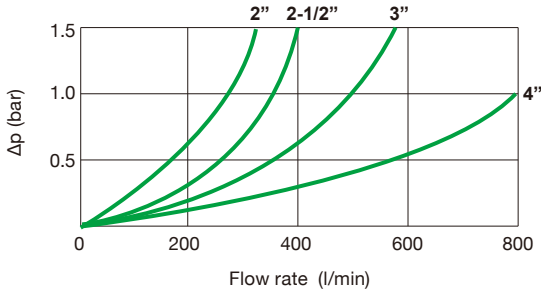
* welding type : 10:1-1/4", 12:1-1/2", 16:2", 20:2-1/2",
24:3", 28:3-1/2", 32:4"

MODEL SPEC.

| Model | Flange | Flow (l/min) | Weight (kg) |
|--------|--------|--------------|-------------|
| FSS-16 | 1 1/4" | 250 | 7.56 |
| | 1 1/2" | 300 | |
| | 2" | 320 | |
| FSS-24 | 2" | 400 | 11.7 |
| | 2 1/2" | 550 | |
| | 3" | 700 | |

| Model | Flange | Flow (l/min) | Weight (kg) |
|--------|--------|--------------|-------------|
| FSS-32 | 3" | 750 | 15.4 |
| | 3 1/2" | 760 | |
| | 4" | 820 | |

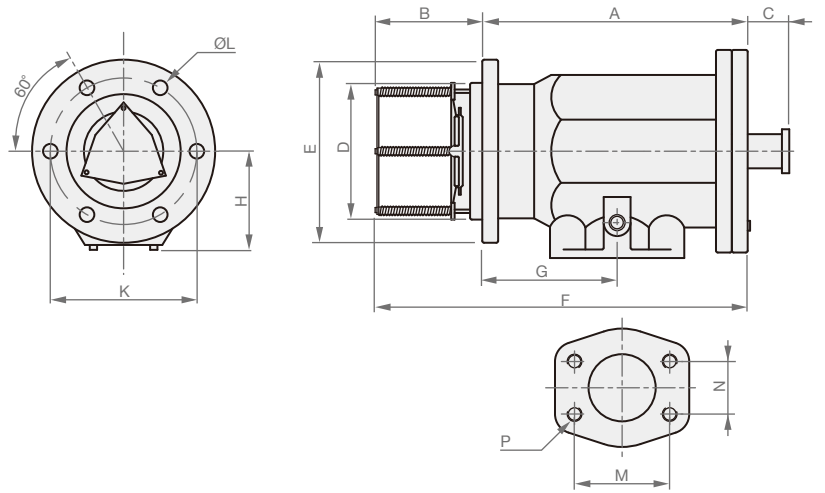
HOUSING PRESSURE DROP CURVE



On the condition of oil viscosity at 32 mm²/s
 Δp varies proportional with density.

DIMENSION

(UNIT : mm)

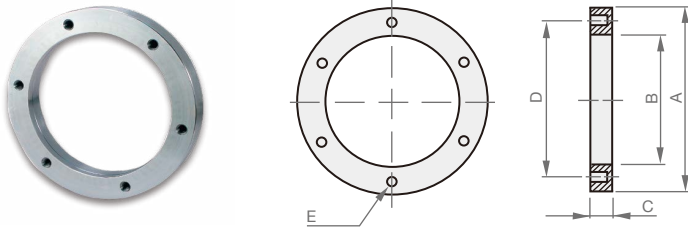


| Model | A | B | C | D | E | F | G | H | K | L | M | N | P |
|--------|-----|-----|----|-----|-----|-----|-----|-----|-----|----|-------|------|-----------|
| FSS-16 | 216 | 120 | 40 | 112 | 150 | 336 | 110 | 87 | 130 | 9 | 77.8 | 42.9 | M12 P1.75 |
| FSS-24 | 235 | 120 | 40 | 150 | 220 | 355 | 120 | 112 | 180 | 13 | 106.4 | 61.9 | M16 P2.0 |
| FSS-32 | 262 | 120 | 40 | 180 | 240 | 382 | 120 | 125 | 210 | 15 | 130.2 | 77.8 | M16 P2.0 |

ACCESSORIES

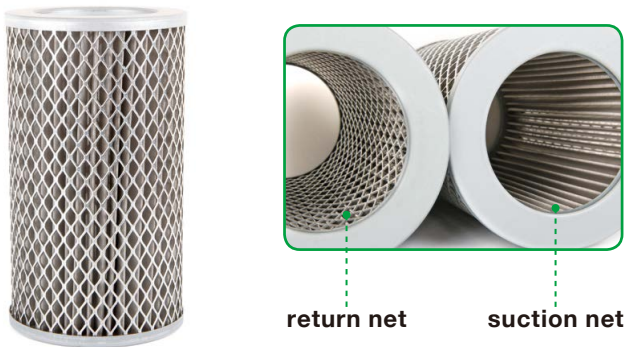
(UNIT : mm)

► Flange



| Model | A | B | C | D | E | Weight (kg) |
|-------|-----|-----|----|-----|-----------|-------------|
| FL-16 | 150 | 112 | 28 | 130 | M8 P1.25 | 1.66 |
| FL-24 | 220 | 150 | 28 | 180 | M12 P1.75 | 3.62 |
| FL-32 | 240 | 180 | 30 | 210 | M12 P1.75 | 4.26 |

► Elements of FFS Suction & Return Line Filter



return net

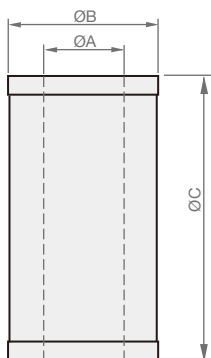
suction net

► Order Codes

SE - **FSS-32** **R** - **100M**

① ② ③ ④

| | | |
|---|--------------------------|-------------------------------|
| ① | ► Elements Model Name | SE |
| ② | ► Filter Model Name | FSS-16, 24, 32 |
| ③ | ► Filtering Direction | S suction net R return net |
| ④ | ► Type of Filter Element | 100M, 120M, 150M, etc. |

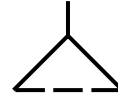


| Model | Filtration Area (cm ²) | Element Size | | | Weight (kg) |
|------------|------------------------------------|--------------|-----|-----|-------------|
| | | A | B | C | |
| SE-FSS-16S | 2300 | 64 | 90 | 199 | 0.36 |
| SE-FSS-16R | 2900 | 64 | 90 | 199 | 0.46 |
| SE-FSS-24S | 3500 | 84 | 125 | 221 | 0.64 |
| SE-FSS-24R | 4100 | 84 | 125 | 221 | 0.70 |
| SE-FSS-32S | 4300 | 99 | 140 | 243 | 0.76 |
| SE-FSS-32R | 5000 | 99 | 140 | 243 | 0.86 |

Elements of Filter



SYMBOLS



FEATURES

► Material of Filtering Element

1. M represents metal material, a indicates glass fiber.
2. Regular order of metal element : 100M, 200M, 300M, 400M, 700M, etc.
3. Regular order of glass fiber element : A3, A5, A10, A25, A40, etc.
ex : If you want to purchase a 400 Mesh metal element, please select 400M. If you need a 10 μ glass fiber element, please choose A10.

► Mesh to Micron Conversion Chart

| Mesh | μm | Mesh | μm |
|------|---------------|------|---------------|
| 20 | 850 | 200 | 75 |
| 40 | 425 | 250 | 63 |
| 60 | 250 | 300 | 50 |
| 100 | 150 | 400 | 40 |
| 120 | 125 | 700 | 25 |
| 150 | 106 | 1450 | 10 |

► What does mesh size mean?

Figuring out what mesh sizes are simple. All you need to do is counting the number of openings in one inch of screen. The number of openings is the mesh size. So a 4 mesh screen means there are four little squares in one inch square of the screen. A 100 mesh screen has 100 openings, and so on. As the number of mesh size increases, the size of the particles decreases. Mesh size is not a precise measurement of particle size.

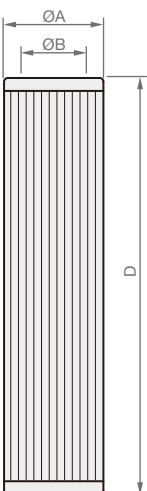
In addition, the finer the weave, the closer the wires getting together. Eventually there is no space between the wires at all.

► What is a micron?

A micron is another measurement of particle size. A micron is one-millionth of a meter or one twenty-five thousandth of an inch.

DIMENSION

(UNIT : mm)



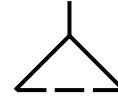
| Model | A | B | D |
|----------------|----|------|-----|
| DMPH, SMPH-*-1 | 85 | 47.5 | 142 |
| DMPH, SMPH-*-2 | 85 | 47.5 | 205 |
| DMPH, SMPH-*-3 | 85 | 47.5 | 257 |



| Model | A | B | C | D |
|-------------|------|----|------|-------|
| FPA, FPF | 66 | 42 | 32 | 141 |
| FPAL, FPFL | 66 | 42 | 32 | 198 |
| HPH-06-2 | 47 | 36 | 24.2 | 117 |
| HPH-06-3 | 47 | 36 | 24.2 | 216 |
| HPH-08-2 | 54 | 35 | 26 | 230 |
| HPH-10/12-2 | 78 | 48 | 39 | 237.5 |
| MPH-04 | 42.5 | 30 | 22 | 88.5 |
| MPH-08 | 66 | 42 | 32 | 141 |
| MPH-10/12 | 82 | 54 | 45 | 205 |

SFN type

SYMBOLS

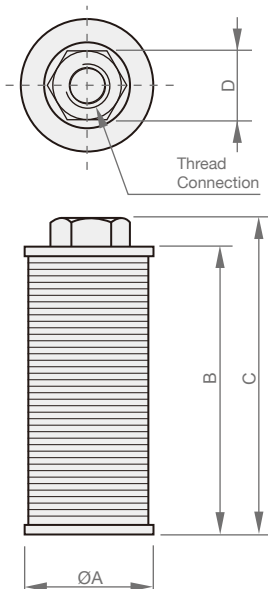


MODEL SPEC.

| Model | Thread Connection (PT) | Flow (l/min) | Weight (kg) |
|--------|------------------------|--------------|-------------|
| SFN-04 | 0.5" | 38 | 0.15 |
| SFN-06 | 0.75" | 49 | 0.20 |
| SFN-08 | 1" | 87 | 0.35 |
| SFN-10 | 1.25" | 150 | 0.48 |
| SFN-12 | 1.5" | 208 | 0.65 |
| SFN-16 | 2" | 320 | 0.80 |
| SFN-20 | 2.5" | 560 | 1.42 |
| SFN-24 | 3" | 610 | 1.71 |

DIMENSION

(UNIT : mm)

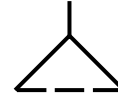


| Model | A | B | C | D |
|--------|-----|-----|-----|-----|
| SFN-04 | 60 | 160 | 175 | 27 |
| SFN-06 | 60 | 160 | 175 | 32 |
| SFN-08 | 85 | 190 | 205 | 46 |
| SFN-10 | 105 | 210 | 225 | 55 |
| SFN-12 | 120 | 235 | 250 | 58 |
| SFN-16 | 120 | 315 | 332 | 75 |
| SFN-20 | 145 | 420 | 442 | 90 |
| SFN-24 | 145 | 420 | 442 | 105 |

SFW type



SYMBOLS

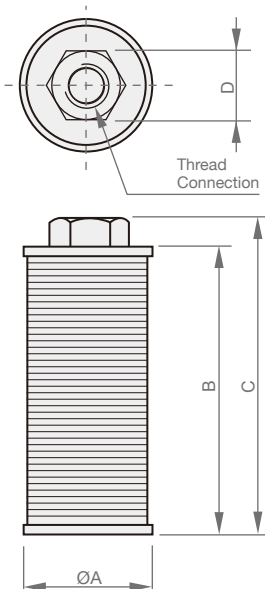


MODEL SPEC.

| Model | Thread Connection (PT) | Flow (l/min) | Weight (kg) |
|---------|------------------------|--------------|-------------|
| SFW-02 | 0.25" | 13 | 0.08 |
| SFW-02A | 0.25" | 15 | 0.10 |
| SFW-03 | 0.375" | 16 | 0.08 |
| SFW-03A | 0.375" | 19 | 0.10 |
| SFW-04 | 0.5" | 33 | 0.14 |
| SFW-06 | 0.75" | 52 | 0.20 |
| SFW-08 | 1" | 110 | 0.40 |
| SFW-10 | 1.25" | 180 | 0.56 |
| SFW-12 | 1.5" | 250 | 0.76 |
| SFW-16 | 2" | 390 | 0.96 |
| SFW-20 | 2.5" | 720 | 1.48 |
| SFW-24 | 3" | 820 | 1.56 |
| SFW-32 | 4" | 1100 | 3.96 |

DIMENSION

(UNIT : mm)

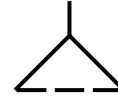


| Model | A | B | C | D |
|---------|-----|-----|-----|-----|
| SFW-02 | 43 | 50 | 63 | 22 |
| SFW-02A | 60 | 50 | 64 | 22 |
| SFW-03 | 43 | 50 | 63 | 22 |
| SFW-03A | 60 | 50 | 64 | 22 |
| SFW-04 | 60 | 100 | 112 | 27 |
| SFW-06 | 67 | 145 | 161 | 32 |
| SFW-08 | 87 | 190 | 210 | 46 |
| SFW-10 | 107 | 203 | 224 | 55 |
| SFW-12 | 127 | 232 | 253 | 58 |
| SFW-16 | 127 | 307 | 330 | 75 |
| SFW-20 | 160 | 348 | 370 | 90 |
| SFW-24 | 160 | 435 | 460 | 105 |
| SFW-32 | 210 | 443 | 458 | 145 |

SFF type



SYMBOLS

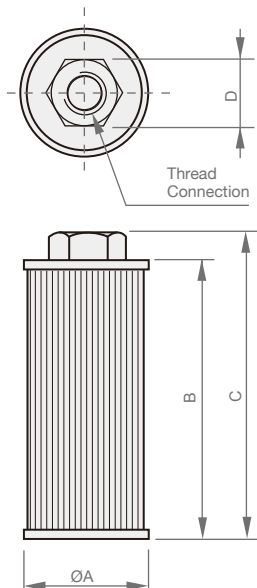


MODEL SPEC.

| Model | Thread Connection (PT) | Flow (l/min) | Weight (kg) |
|---------|------------------------|--------------|-------------|
| SFF-02 | 0.25" | 12 | 0.08 |
| SFF-02A | 0.25" | 15 | 0.10 |
| SFF-03 | 0.375" | 17 | 0.08 |
| SFF-03A | 0.375" | 19 | 0.10 |
| SFF-04 | 0.5" | 38 | 0.14 |
| SFF-06 | 0.75" | 65 | 0.18 |
| SFF-08 | 1" | 110 | 0.22 |
| SFF-10 | 1.25" | 220 | 0.30 |
| SFF-12 | 1.5" | 310 | 0.42 |
| SFF-16 | 2" | 410 | 0.64 |
| SFF-20 | 2.5" | 760 | 1.54 |
| SFF-24 | 3" | 880 | 1.58 |
| SFF-32 | 4" | 1000 | 3.75 |

DIMENSION

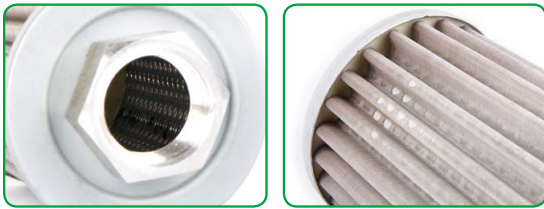
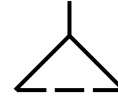
(UNIT : mm)



| Model | A | B | C | D |
|---------|-----|-----|-----|-----|
| SFF-02 | 43 | 50 | 60 | 22 |
| SFF-02A | 60 | 50 | 60 | 22 |
| SFF-03 | 43 | 50 | 60 | 22 |
| SFF-03A | 60 | 50 | 60 | 22 |
| SFF-04 | 60 | 100 | 112 | 27 |
| SFF-06 | 67 | 130 | 145 | 32 |
| SFF-08 | 87 | 145 | 162 | 46 |
| SFF-10 | 107 | 176 | 194 | 55 |
| SFF-12 | 127 | 191 | 209 | 58 |
| SFF-16 | 127 | 203 | 244 | 75 |
| SFF-20 | 160 | 348 | 370 | 90 |
| SFF-24 | 160 | 348 | 370 | 105 |
| SFF-32 | 210 | 350 | 365 | 145 |

SFC type

SYMBOLS

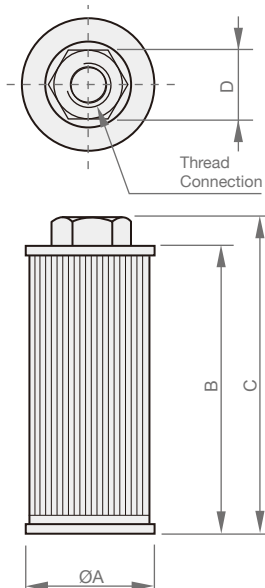


MODEL SPEC.

| Model | Thread Connection (PT) | Flow (l/min) | Weight (kg) |
|--------|------------------------|--------------|-------------|
| SFC-02 | 1/4" | 25 | 0.22 |
| SFC-03 | 3/8" | 25 | 0.22 |
| SFC-04 | 0.5" | 40 | 0.35 |
| SFC-06 | 0.75" | 62 | 0.45 |
| SFC-08 | 1" | 125 | 0.50 |
| SFC-10 | 1.25" | 210 | 0.85 |
| SFC-12 | 1.5" | 270 | 1.00 |
| SFC-16 | 2" | 450 | 1.20 |
| SFC-20 | 2.5" | 720 | 1.70 |
| SFC-24 | 3" | 820 | 1.71 |

DIMENSION

(UNIT : mm)

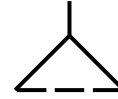


| Model | A | B | C | D |
|--------|-----|-----|-----|-----|
| SFC-02 | 60 | 80 | 90 | 22 |
| SFC-03 | 60 | 80 | 90 | 22 |
| SFC-04 | 60 | 105 | 115 | 27 |
| SFC-06 | 60 | 165 | 175 | 32 |
| SFC-08 | 85 | 130 | 145 | 46 |
| SFC-10 | 105 | 130 | 145 | 55 |
| SFC-12 | 105 | 190 | 205 | 58 |
| SFC-16 | 120 | 210 | 225 | 75 |
| SFC-20 | 145 | 310 | 330 | 90 |
| SFC-24 | 145 | 310 | 330 | 102 |

SFWS type



SYMBOLS



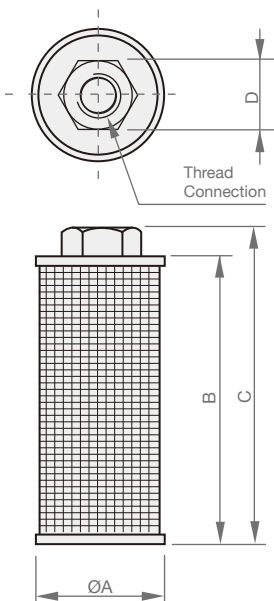
MODEL SPEC.

| Model | Thread Connection (PT) | Flow (l/min) | Weight (kg) |
|---------|------------------------|--------------|-------------|
| SFWS-04 | 0.5" | 33 | 0.13 |
| SFWS-06 | 0.75" | 52 | 0.22 |
| SFWS-08 | 1" | 110 | 0.36 |
| SFWS-10 | 1.25" | 180 | 0.48 |
| SFWS-12 | 1.5" | 250 | 0.67 |
| SFWS-16 | 2" | 390 | 0.81 |

Material : stainless steel

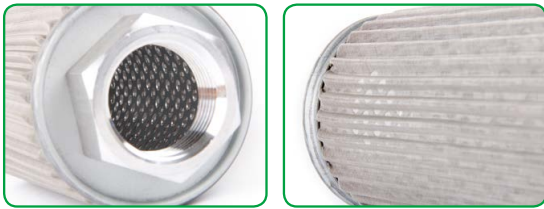
DIMENSION

(UNIT : mm)

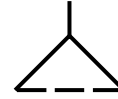


| Model | A | B | C | D |
|---------|-----|-----|-----|----|
| SFWS-04 | 60 | 100 | 112 | 27 |
| SFWS-06 | 67 | 145 | 161 | 32 |
| SFWS-08 | 87 | 190 | 210 | 41 |
| SFWS-10 | 107 | 203 | 224 | 50 |
| SFWS-12 | 127 | 232 | 253 | 58 |
| SFWS-16 | 127 | 307 | 330 | 75 |

SFFS type



SYMBOLS



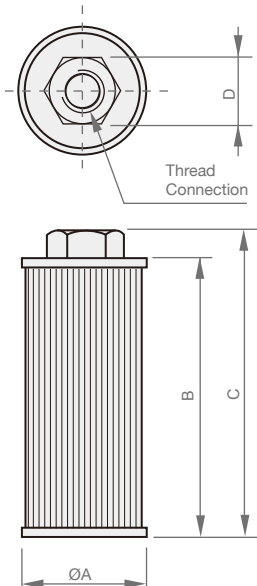
MODEL SPEC.

| Model | Thread Connection (PT) | Flow (l/min) | Weight (kg) |
|---------|------------------------|--------------|-------------|
| SFFS-04 | 0.5" | 38 | 0.14 |
| SFFS-06 | 0.75" | 65 | 0.16 |
| SFFS-08 | 1" | 110 | 0.26 |
| SFFS-10 | 1.25" | 220 | 0.30 |
| SFFS-12 | 1.5" | 310 | 0.42 |
| SFFS-16 | 2" | 410 | 0.55 |

Material : stainless steel

DIMENSION

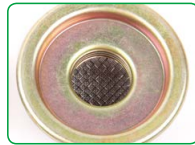
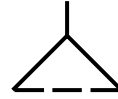
(UNIT : mm)



| Model | A | B | C | D |
|---------|-----|-----|-----|----|
| SFFS-04 | 60 | 100 | 112 | 27 |
| SFFS-06 | 60 | 130 | 145 | 32 |
| SFFS-08 | 67 | 145 | 162 | 41 |
| SFFS-10 | 73 | 176 | 194 | 50 |
| SFFS-12 | 87 | 191 | 209 | 58 |
| SFFS-16 | 127 | 203 | 224 | 75 |

M-43

SYMBOLS

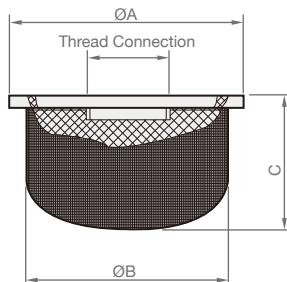


MODEL SPEC.

| Model | Thread Connection (PT) | Flow (l/min) | Filtration (mesh) | Weight (kg) |
|---------|------------------------|--------------|-------------------|-------------|
| M-43-03 | 3/8" | 12 | 60 | 0.02 |
| M-43-06 | 3/4" | 15 | | 0.02 |

DIMENSION

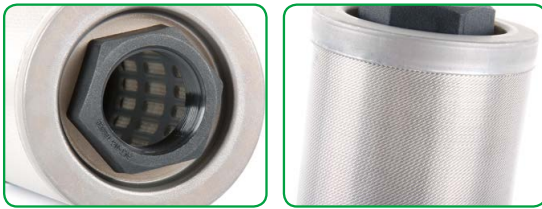
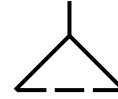
(UNIT : mm)



| Model | A | B | C |
|---------|----|----|----|
| M-43-03 | 43 | 36 | 26 |
| M-43-06 | 43 | 36 | 26 |

N type

SYMBOLS

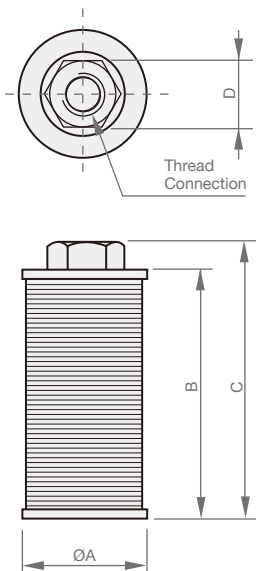


MODEL SPEC.

| Model | Thread Connection (PT) | Flow (l/min) | Filtration (mesh) | Weight (kg) |
|-------|------------------------|--------------|-------------------|-------------|
| N-04 | 1/2" | 35 | 150 | 0.28 |
| N-06 | 3/4" | 46 | | 0.29 |
| N-08 | 1" | 90 | | 0.47 |
| N-10 | 1 1/4" | 150 | | 0.76 |
| N-12 | 1 1/2" | 205 | | 1.00 |
| N-16 | 2" | 320 | | 1.28 |
| N-20 | 2 1/2" | 550 | | 2.54 |
| N-24 | 3" | 600 | | 2.74 |

DIMENSION

(UNIT : mm)

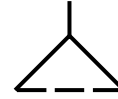


| Model | A | B | C | D |
|-------|-----|-----|-----|-----|
| N-04 | 64 | 153 | 160 | 27 |
| N-06 | 64 | 153 | 166 | 34 |
| N-08 | 83 | 198 | 210 | 42 |
| N-10 | 103 | 215 | 231 | 53 |
| N-12 | 122 | 232 | 246 | 61 |
| N-16 | 122 | 317 | 332 | 74 |
| N-20 | 148 | 419 | 434 | 105 |
| N-24 | 148 | 419 | 434 | 105 |

W type



SYMBOLS

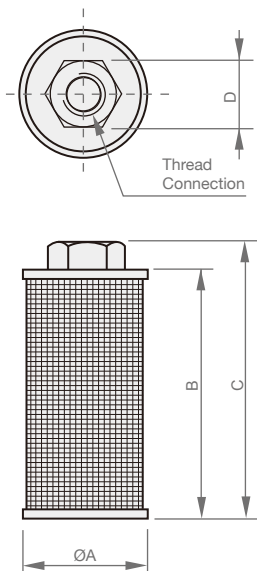


MODEL SPEC.

| Model | Thread Connection (PT) | Flow (l/min) | Filtration (mesh) | Weight (kg) |
|-------|------------------------|--------------|-------------------|-------------|
| W-02S | 1/4" | 14 | 120 | 0.06 |
| W-02 | 1/4" | 14 | | 0.09 |
| W-03S | 3/8" | 17 | | 0.06 |
| W-03 | 3/8" | 17 | | 0.12 |
| W-04 | 1/2" | 30 | | 0.15 |
| W-06 | 3/4" | 50 | | 0.18 |
| W-08 | 1" | 100 | | 0.24 |
| W-10 | 1 1/4" | 180 | | 0.35 |
| W-12 | 1 1/2" | 246 | | 0.55 |
| W-16 | 2" | 384 | | 0.62 |
| W-20 | 2 1/2" | 700 | 100 | 1.10 |
| W-24 | 3" | 800 | | 1.29 |
| W-32 | 4" | 1000 | | 2.45 |

DIMENSION

(UNIT : mm)

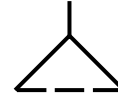


| Model | A | B | C | D |
|-------|------|-----|-----|-----|
| W-02S | 46.5 | 51 | 59 | 22 |
| W-02 | 46.5 | 99 | 107 | 22 |
| W-03S | 46.5 | 51 | 59 | 22 |
| W-03 | 46.5 | 99 | 107 | 22 |
| W-04 | 53 | 132 | 144 | 29 |
| W-06 | 66 | 147 | 162 | 34 |
| W-08 | 85 | 178 | 194 | 42 |
| W-10 | 105 | 198 | 215 | 54 |
| W-12 | 125 | 233 | 252 | 61 |
| W-16 | 125 | 299 | 318 | 74 |
| W-20 | 158 | 344 | 368 | 97 |
| W-24 | 158 | 432 | 456 | 105 |
| W-32 | 208 | 356 | 379 | 142 |

MF type



SYMBOLS

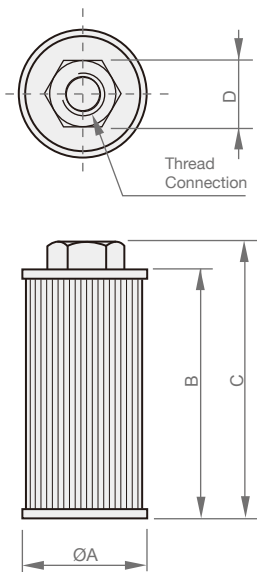


MODEL SPEC.

| Model | Thread Connection (PT) | Flow (l/min) | Filtration (mesh) | Weight (kg) |
|--------|------------------------|--------------|-------------------|-------------|
| MF-02 | 1/4" | 20 | 100 | 0.09 |
| MF-03 | 3/8" | 25 | | 0.09 |
| MF-04 | 1/2" | 30 | | 0.09 |
| MF-06 | 3/4" | 55 | | 0.14 |
| MF-08 | 1" | 90 | | 0.16 |
| MF-10 | 1 1/4" | 130 | | 0.18 |
| MF-12 | 1 1/2" | 200 | | 0.25 |
| MF-16 | 2" | 280 | | 0.37 |
| MF-20S | 2 1/2" | 700 | | 0.97 |
| MF-20 | 2 1/2" | 700 | | 1.14 |
| MF-24S | 3" | 800 | | 1.00 |
| MF-24 | 3" | 800 | | 1.20 |
| MF-32 | 4" | 1000 | | 1.58 |

DIMENSION

(UNIT : mm)



| Model | A | B | C | D |
|--------|-----|-----|-----|-----|
| MF-02 | 54 | 86 | 92 | 21 |
| MF-03 | 54 | 86 | 92 | 21 |
| MF-04 | 54 | 86 | 92 | 27 |
| MF-06 | 66 | 121 | 137 | 34 |
| MF-08 | 66 | 147 | 163 | 42 |
| MF-10 | 66 | 166 | 184 | 54 |
| MF-12 | 85 | 177 | 194 | 61 |
| MF-16 | 105 | 198 | 214 | 74 |
| MF-20S | 158 | 250 | 270 | 109 |
| MF-20 | 158 | 350 | 370 | 109 |
| MF-24S | 158 | 250 | 270 | 109 |
| MF-24 | 158 | 350 | 370 | 109 |
| MF-32 | 208 | 356 | 379 | 142 |

Special Suction Filter



FEATURES

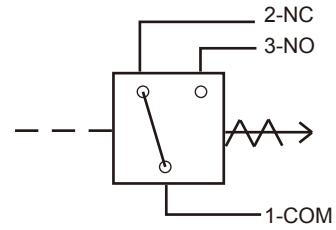
We provide customized service for any different sizes and some particular materials which can meet your needs.

1. According to different precision filtration, we have many material options such as iron net, nonwoven material, filtering paper, etc.
2. The lengths of all the strainers can be altered.
3. If you need to add the grips on the surface outside or inside, please let us know.

S1 (Visual)



SYMBOLS



ORDER CODES

S1 - **05** - **10**

① ② ③

| | | |
|---|-----------|-------------|
| ① ▶ Model Name | S1 | visual type |
| ② ▶ Mounting Type | 05 | BSP 1/2" |
| | 18 | M18 P1.5 |
| ③ ▶ React to Pressure Differential | 10 | 10 Bar |
| | 35 | 3.5 Bar |

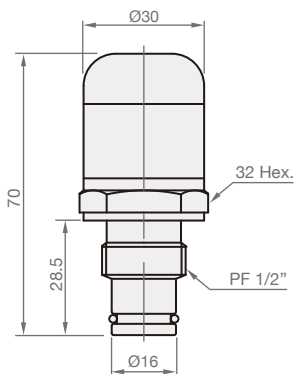
MODEL SPEC.

| Model | React to Pressure Differential (bar) | Weight (kg) |
|----------|--------------------------------------|-------------|
| S1-05-10 | 10 | 0.14 |
| S1-05-35 | 3.5 | 0.14 |
| S1-18-10 | 10 | 0.14 |
| S1-18-35 | 3.5 | 0.14 |

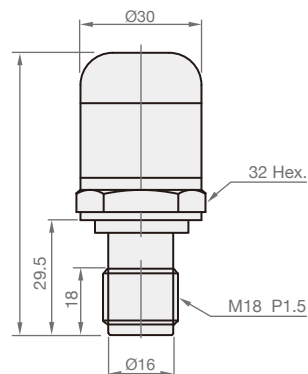
DIMENSION

(UNIT : mm)

▶ S1-05



▶ S1-18



S2 (Visual-Electrical)

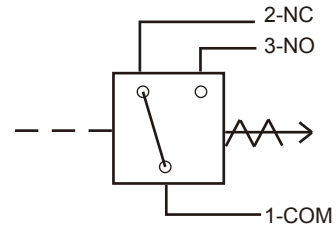


S2-05



S2-18

SYMBOLS



ORDER CODES

S2 - **18** - **35**

① ② ③

| | | | |
|---|---|-----------|----------------------------|
| ① | ▶ Model Name | S2 | visual and electrical type |
| ② | ▶ Mounting Type | 05 | BSP 1/2" |
| | | 18 | M18 P1.5 |
| ③ | ▶ React to Pressure Differential | 10 | 10 Bar |
| | | 35 | 3.5 Bar |

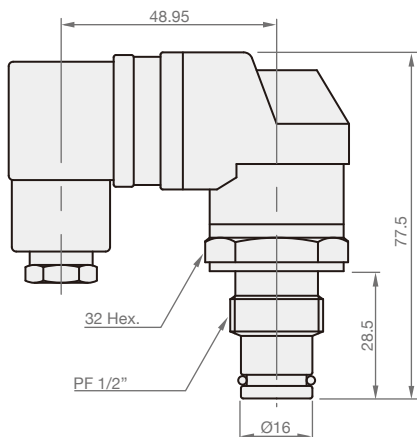
MODEL SPEC.

| Model | React to Pressure Differential (bar) | Weight (kg) |
|----------|--------------------------------------|-------------|
| S2-05-10 | 10 | 0.2 |
| S2-05-35 | 3.5 | 0.2 |
| S2-18-10 | 10 | 0.2 |
| S2-18-35 | 3.5 | 0.2 |

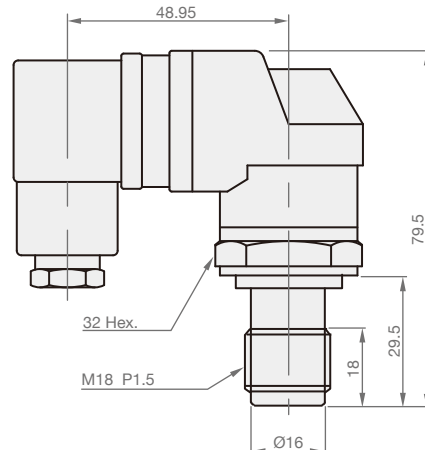
DIMENSION

(UNIT : mm)

▶ S2-05



▶ S2-18



Steed Machinery Co., Ltd.

No. 28, Ruiguang St., South Dist.,
Taichung City 40249,
Taiwan
Tel : +886-4-2285-4867
Fax : +886-4-2285-2848
Email : info@steedmachinery.com.tw

more information
www.steedmachinery.com.tw

